

SPLIT FOUNDATION WALL INSULATION (ICF) DETAIL AT BELOW GRADE SLAB/ FULL FOUNDATION

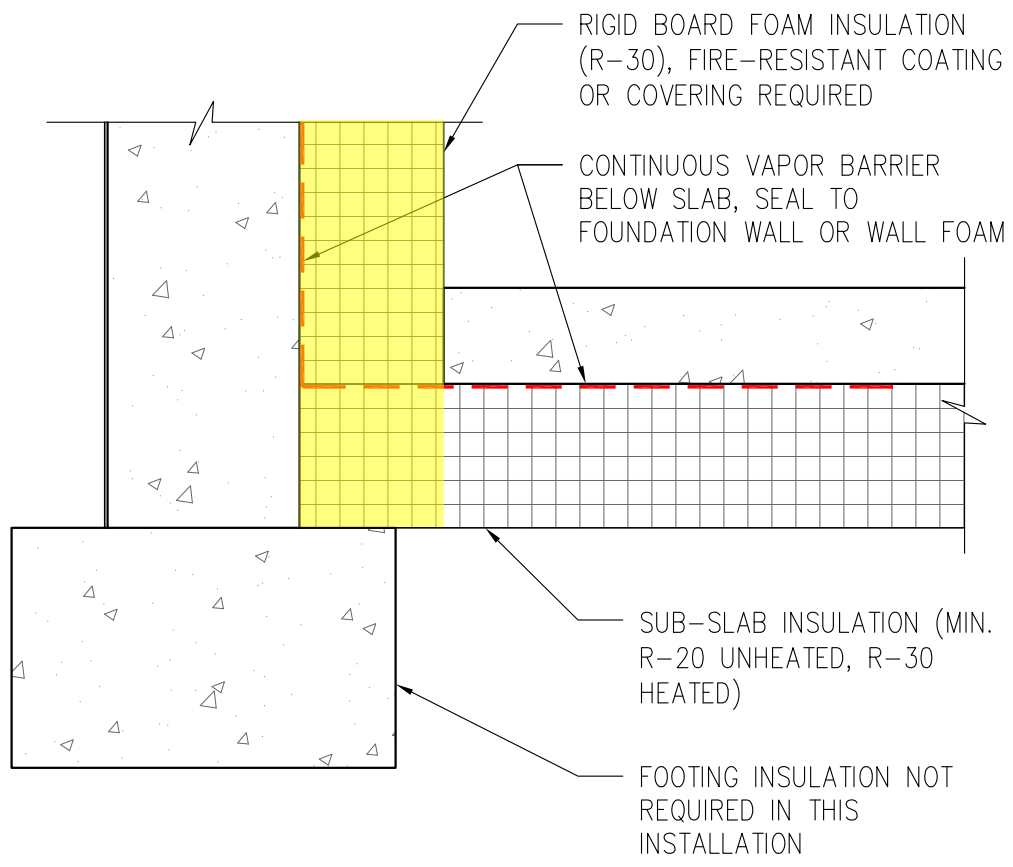
NOTES:

1. DRAWING FOR INFORMATIONAL USE ONLY. NOT INTENDED TO SHOW ALL ASPECTS OF DETAIL.
2. YELLOW HIGHLIGHTS INSULATION SPECIFIC TO COMPONENT
3. DASHED RED LINE INDICATES LOCATION OF AIR/ VAPOR BARRIER. NOT A SPECIFIC MATERIAL.

SCALE:



Efficiency Vermont Certified: HIGH PERFORMANCE LEVEL



THERMALLY ISOLATED SLAB DETAIL
AT BELOW GRADE SLAB

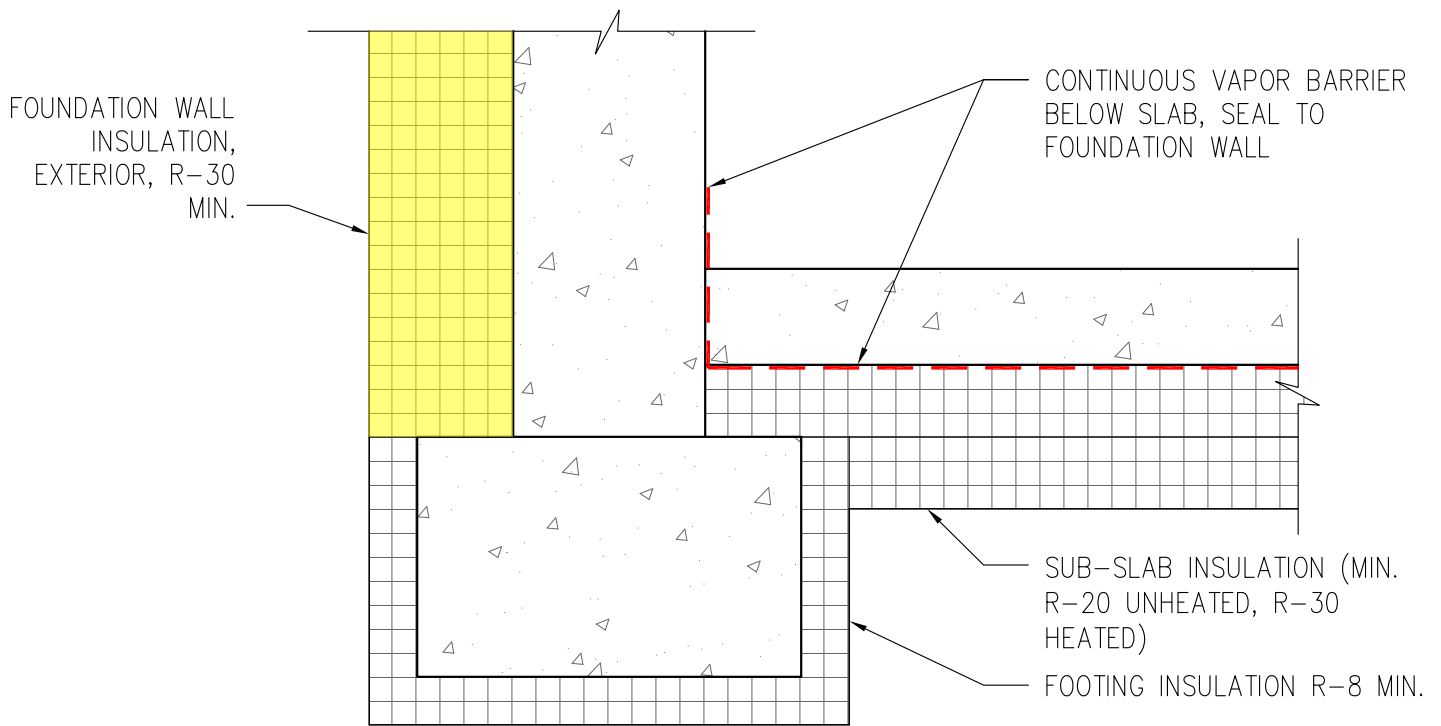
NOTES:

1. DRAWING FOR INFORMATIONAL USE ONLY. NOT INTENDED TO SHOW ALL ASPECTS OF DETAIL.
2. YELLOW HIGHLIGHTS INSULATION SPECIFIC TO COMPONENT
3. DASHED RED LINE INDICATES LOCATION OF AIR/ VAPOR BARRIER. NOT A SPECIFIC MATERIAL.

SCALE:



Efficiency Vermont Certified: HIGH PERFORMANCE LEVEL

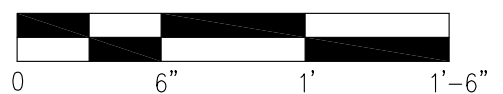


EXTERIOR FOUNDATION WALL INSULATION AT BASEMENT AT BELOW GRADE SLAB

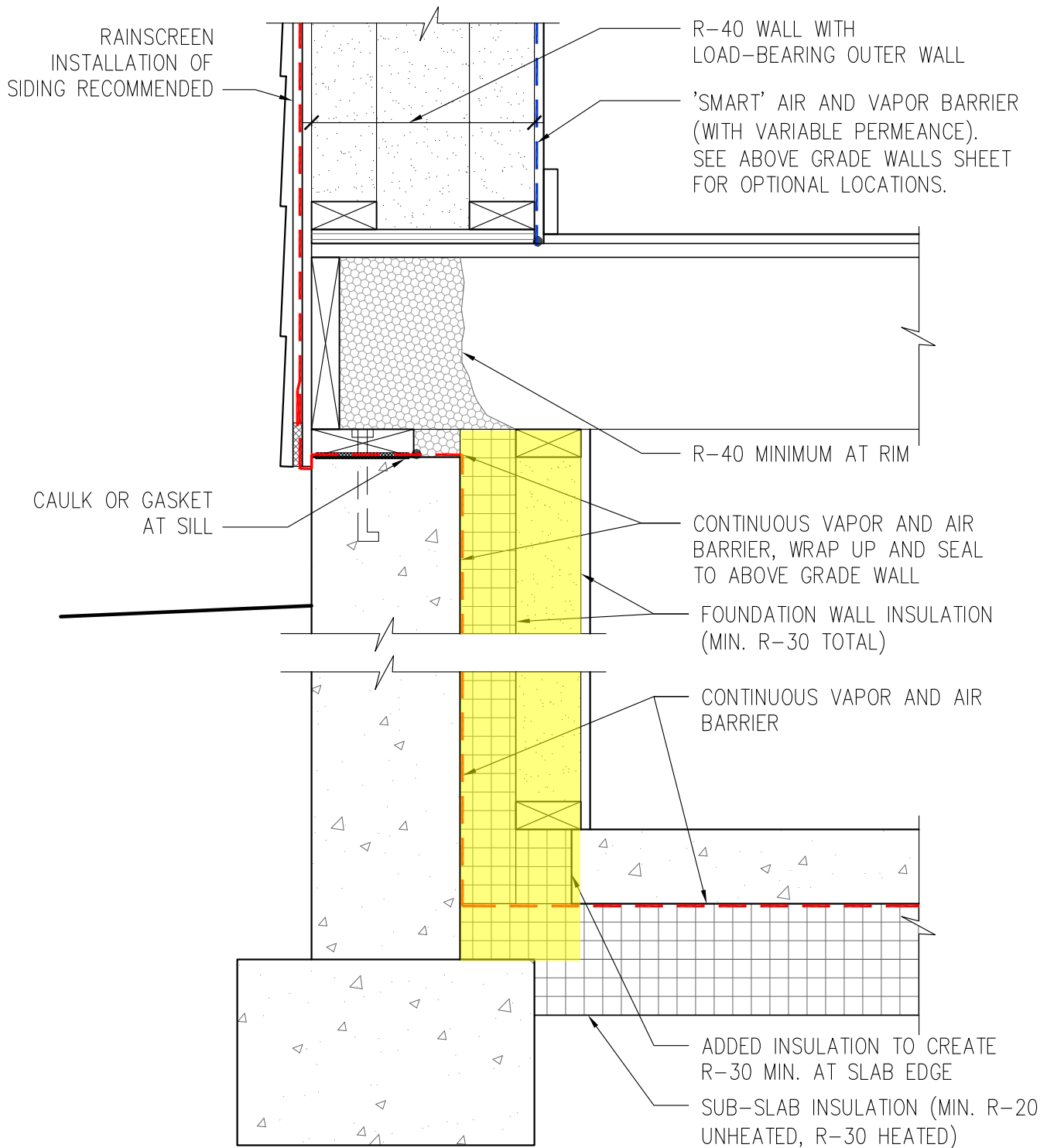
NOTES:

1. DRAWING FOR INFORMATIONAL USE ONLY. NOT INTENDED TO SHOW ALL ASPECTS OF DETAIL.
2. YELLOW HIGHLIGHTS INSULATION SPECIFIC TO COMPONENT
3. DASHED RED LINE INDICATES LOCATION OF AIR/ VAPOR BARRIER. NOT A SPECIFIC MATERIAL.

SCALE:



Efficiency Vermont Certified: HIGH PERFORMANCE LEVEL

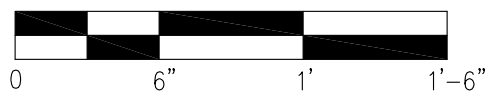


FOUNDATION WALL TO ABOVE GRADE WALL (RIM) INSULATION DETAIL

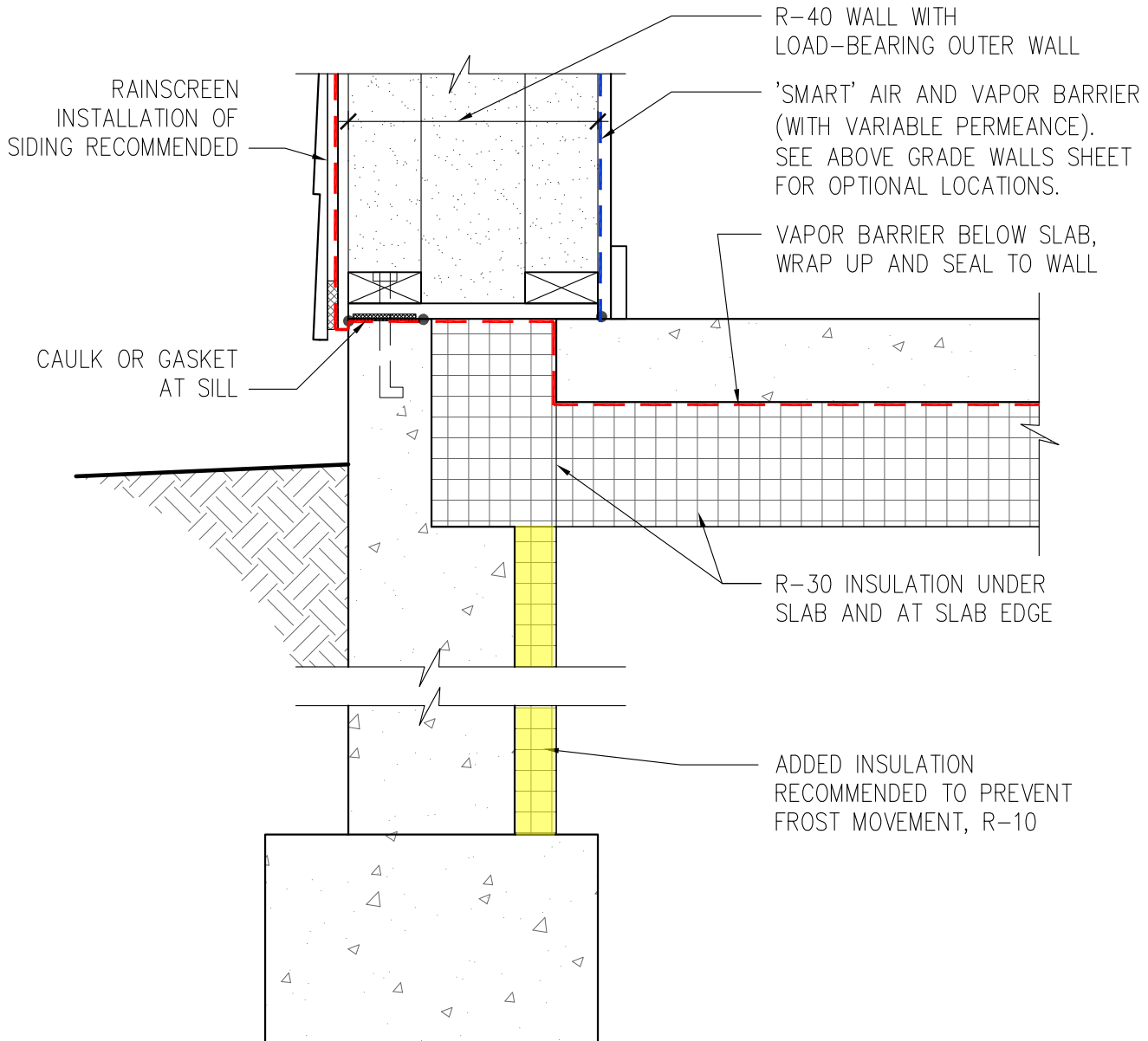
NOTES:

1. DRAWING FOR INFORMATIONAL USE ONLY. NOT INTENDED TO SHOW ALL ASPECTS OF DETAIL.
2. YELLOW HIGHLIGHTS INSULATION SPECIFIC TO COMPONENT
3. DASHED RED LINE INDICATES LOCATION OF AIR/ VAPOR BARRIER. NOT A SPECIFIC MATERIAL.

SCALE:



Efficiency Vermont Certified: HIGH PERFORMANCE LEVEL



NOTCHED FOUNDATION AND DOUBLE STUD WALL AT SLAB ON GRADE

NOTES:

1. DRAWING FOR INFORMATIONAL USE ONLY. NOT INTENDED TO SHOW ALL ASPECTS OF DETAIL.
2. YELLOW HIGHLIGHTS INSULATION SPECIFIC TO COMPONENT
3. DASHED RED LINE INDICATES LOCATION OF AIR/ VAPOR BARRIER. NOT A SPECIFIC MATERIAL.

SCALE:



Efficiency Vermont Certified: HIGH PERFORMANCE LEVEL

NOTE: THIS IS NOT A RECOMMENDED DETAIL IF BUILDING A DOUBLE STUD WALL. BUT THE EXTERIOR FOUNDATION WALL INSULATION HERE ALIGNS WELL WITH THE ABOVE GRADE EXTERIOR INSULATION.

FOUNDATION WALL INSULATION, EXTERIOR, R-30 MIN.

R-40 MIN. WALL WITH CONTINUOUS EXTERIOR INSULATION. SEE ABOVE GRADE WALLS SHEET FOR OPTIONAL CONFIGURATIONS.

CAULK OR GASKET AT SILL

NOTCHED FOUNDATION -OR- CONCEAL JOINT WITH FINISH FLOORING

R-30 INSULATION UNDER SLAB

VAPOR BARRIER BELOW SLAB, WRAP UP AND SEAL TO WALL MIN. R-10

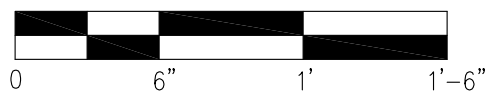
FOOTING INSULATION R-8 MIN.

EXTERIOR INSULATION AT SLAB ON GRADE

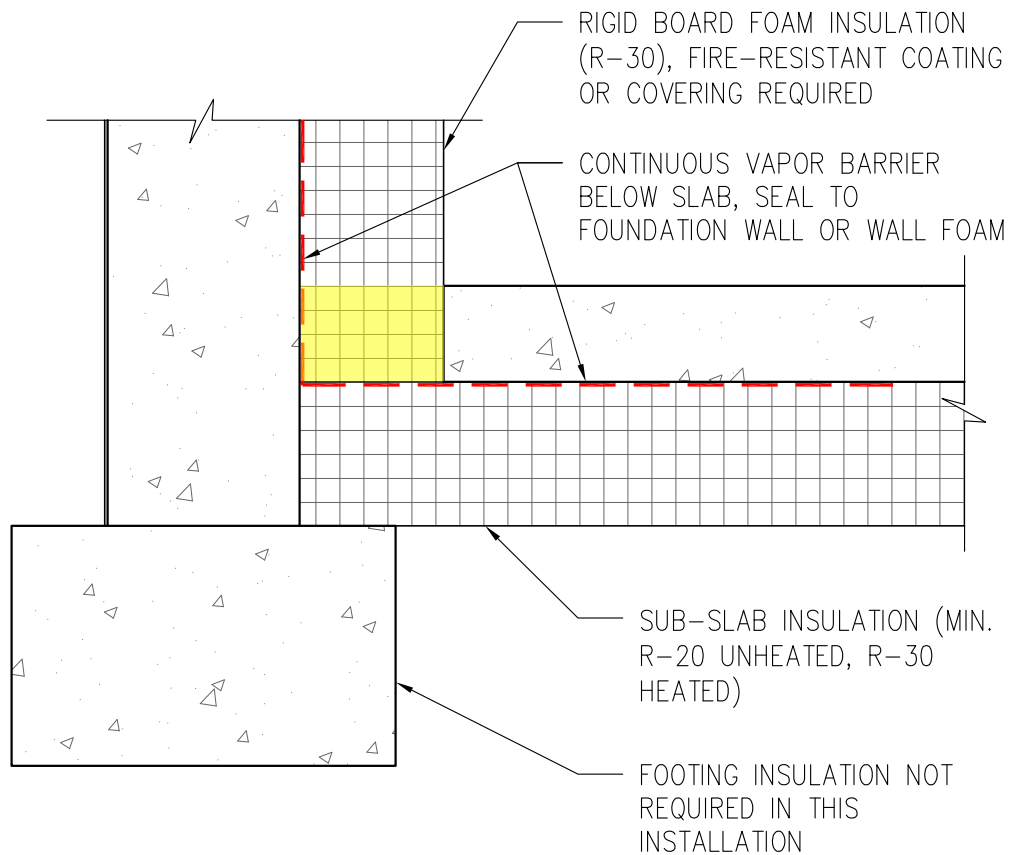
NOTES:

1. DRAWING FOR INFORMATIONAL USE ONLY. NOT INTENDED TO SHOW ALL ASPECTS OF DETAIL.
2. YELLOW HIGHLIGHTS INSULATION SPECIFIC TO COMPONENT
3. DASHED RED LINE INDICATES LOCATION OF AIR/ VAPOR BARRIER. NOT A SPECIFIC MATERIAL.

SCALE:



Efficiency Vermont Certified: HIGH PERFORMANCE LEVEL



THERMALLY ISOLATED SLAB DETAIL
AT BELOW GRADE SLAB

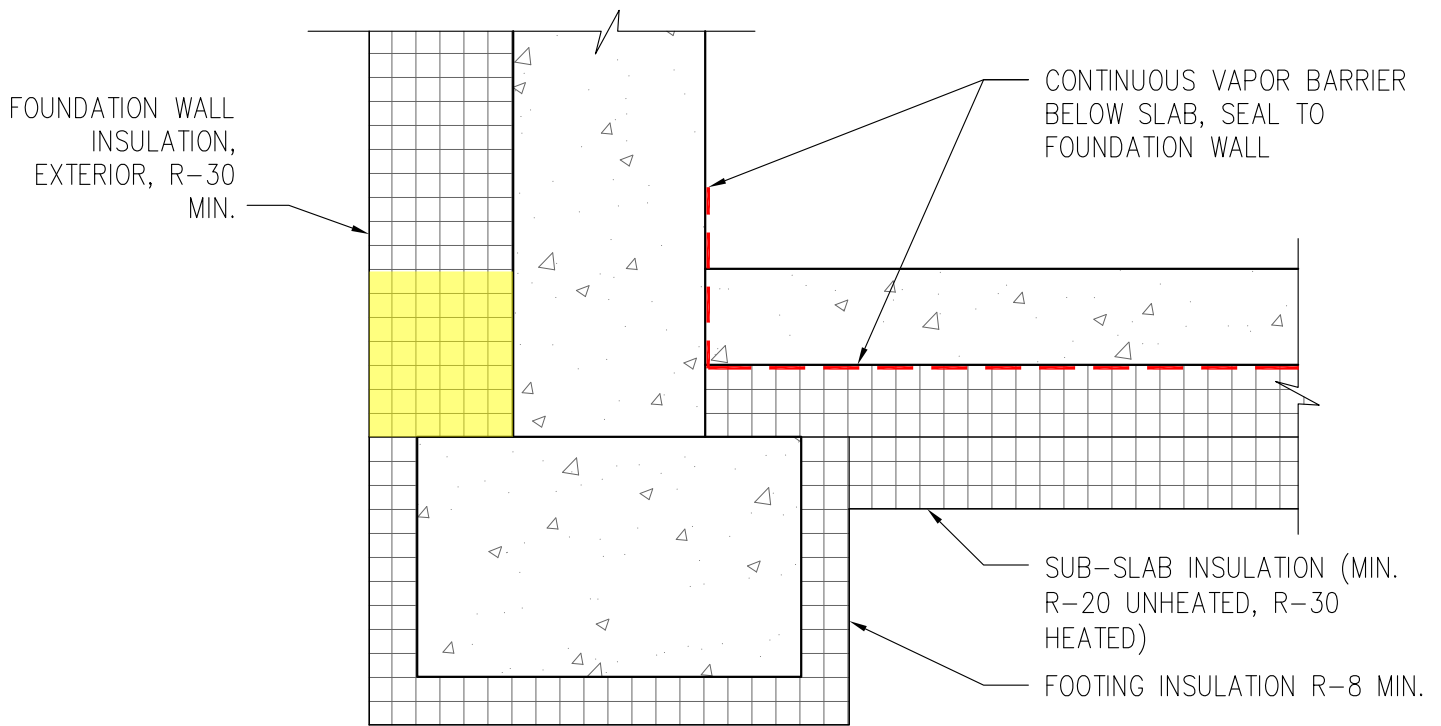
NOTES:

1. DRAWING FOR INFORMATIONAL USE ONLY. NOT INTENDED TO SHOW ALL ASPECTS OF DETAIL.
2. YELLOW HIGHLIGHTS INSULATION SPECIFIC TO COMPONENT
3. DASHED RED LINE INDICATES LOCATION OF AIR/ VAPOR BARRIER. NOT A SPECIFIC MATERIAL.

SCALE:



Efficiency Vermont Certified: HIGH PERFORMANCE LEVEL

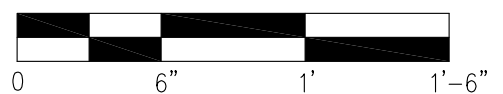


EXTERIOR FOUNDATION WALL INSULATION AT BASEMENT AT BELOW GRADE SLAB

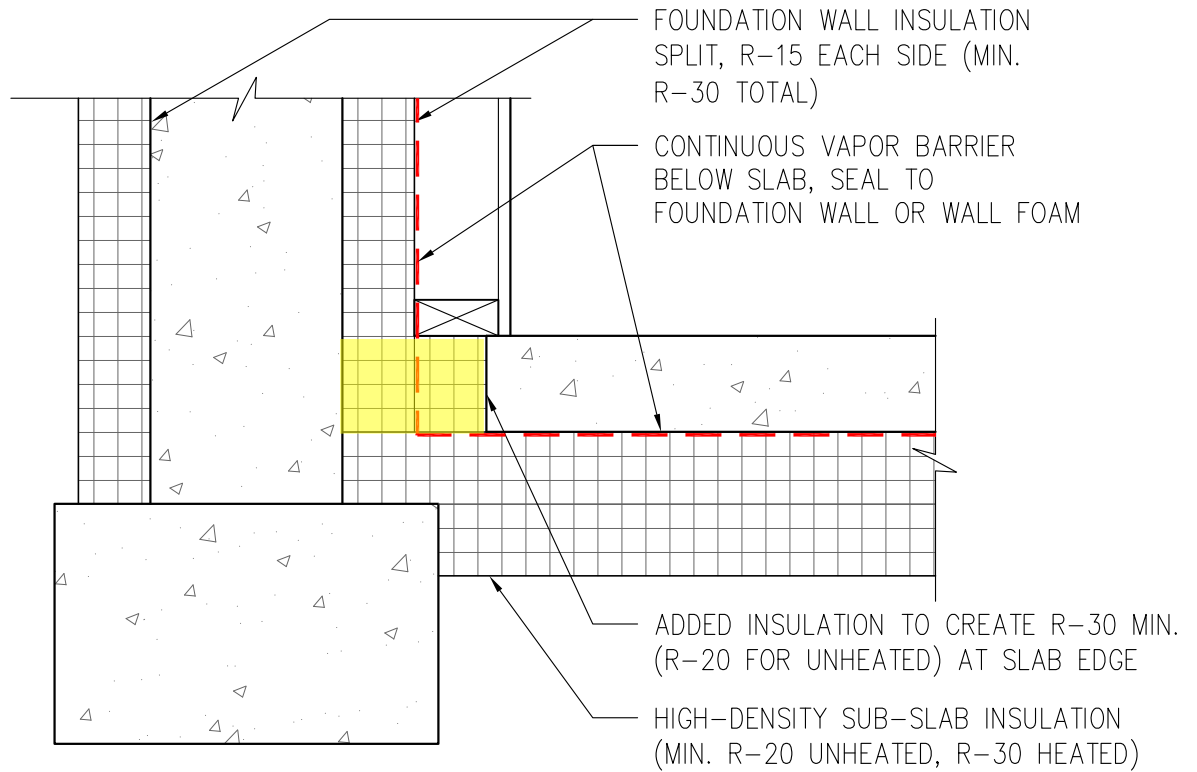
NOTES:

1. DRAWING FOR INFORMATIONAL USE ONLY. NOT INTENDED TO SHOW ALL ASPECTS OF DETAIL.
2. YELLOW HIGHLIGHTS INSULATION SPECIFIC TO COMPONENT
3. DASHED RED LINE INDICATES LOCATION OF AIR/ VAPOR BARRIER. NOT A SPECIFIC MATERIAL.

SCALE:



Efficiency Vermont Certified: HIGH PERFORMANCE LEVEL

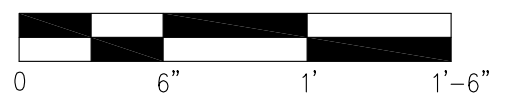


SPLIT FOUNDATION WALL INSULATION (ICF) DETAIL AT BELOW GRADE SLAB/ FULL FOUNDATION

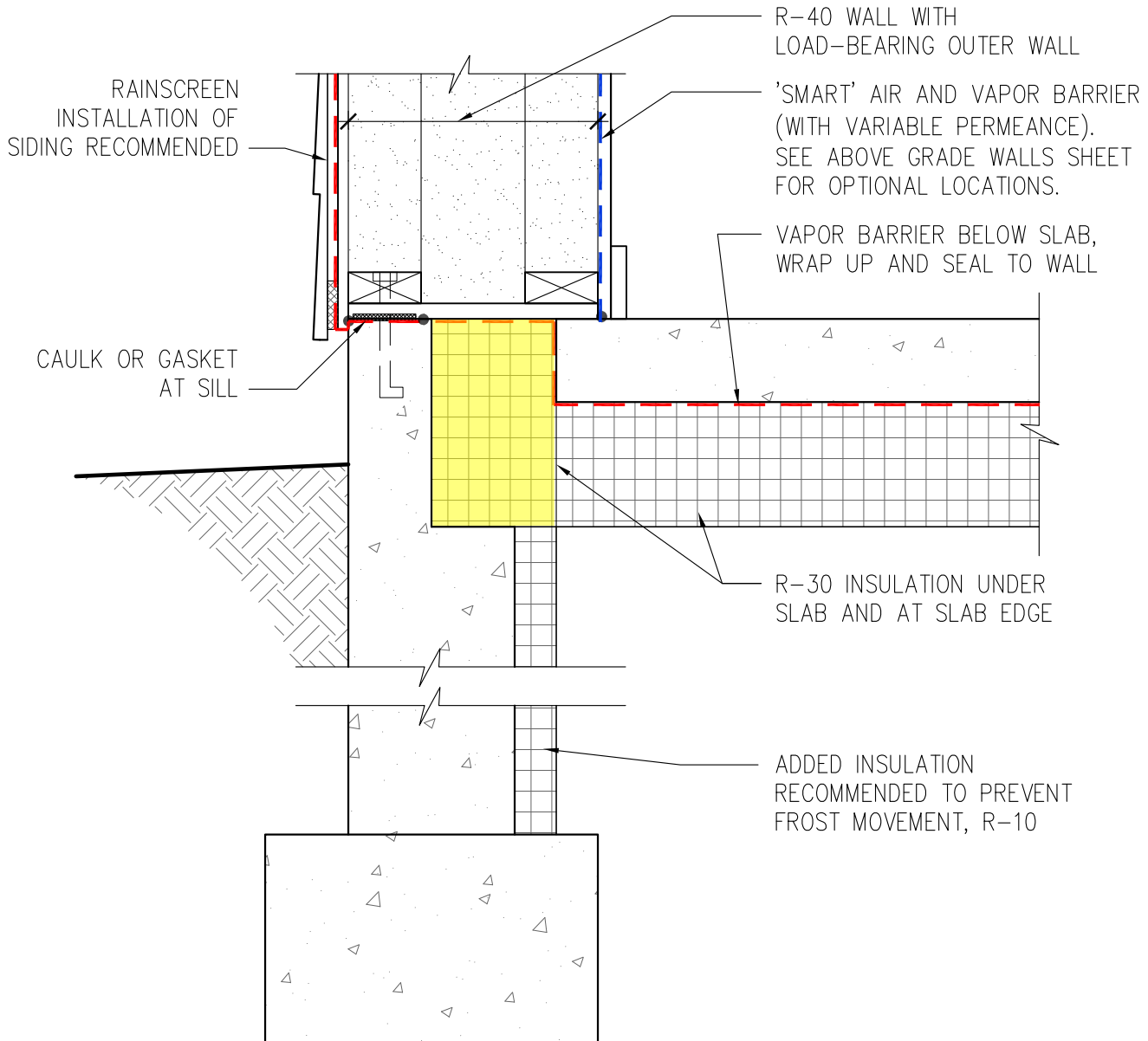
NOTES:

1. DRAWING FOR INFORMATIONAL USE ONLY. NOT INTENDED TO SHOW ALL ASPECTS OF DETAIL.
2. YELLOW HIGHLIGHTS INSULATION SPECIFIC TO COMPONENT
3. DASHED RED LINE INDICATES LOCATION OF AIR/ VAPOR BARRIER. NOT A SPECIFIC MATERIAL.

SCALE:



Efficiency Vermont Certified: HIGH PERFORMANCE LEVEL

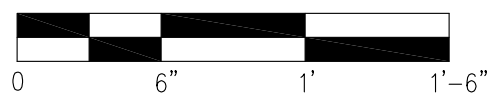


NOTCHED FOUNDATION AND DOUBLE STUD WALL AT SLAB ON GRADE

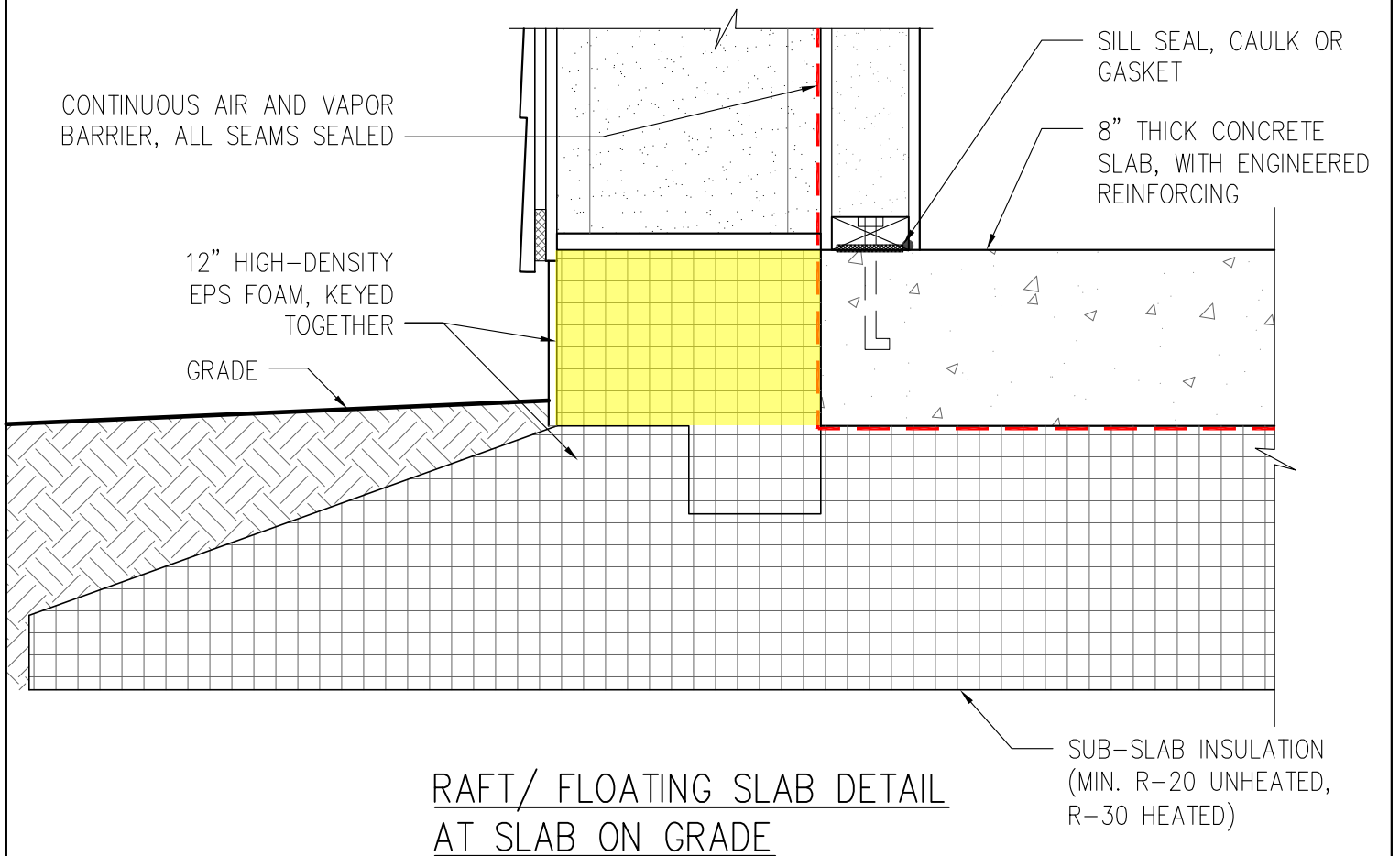
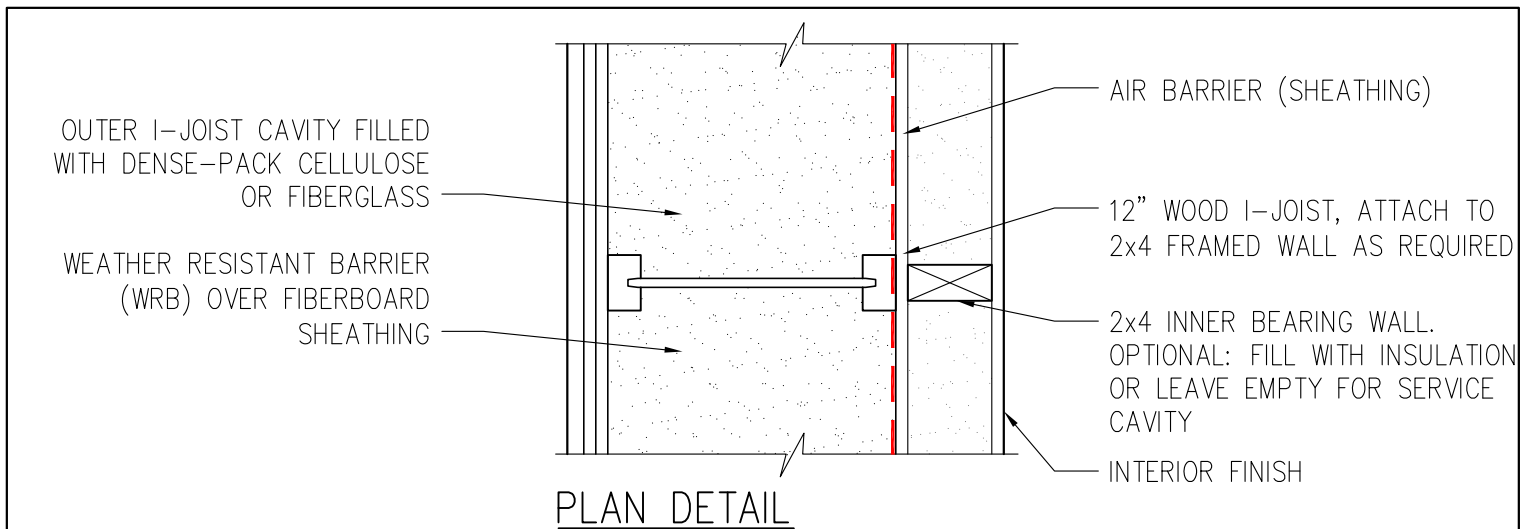
NOTES:

1. DRAWING FOR INFORMATIONAL USE ONLY. NOT INTENDED TO SHOW ALL ASPECTS OF DETAIL.
2. YELLOW HIGHLIGHTS INSULATION SPECIFIC TO COMPONENT
3. DASHED RED LINE INDICATES LOCATION OF AIR/ VAPOR BARRIER. NOT A SPECIFIC MATERIAL.

SCALE:



Efficiency Vermont Certified: HIGH PERFORMANCE LEVEL



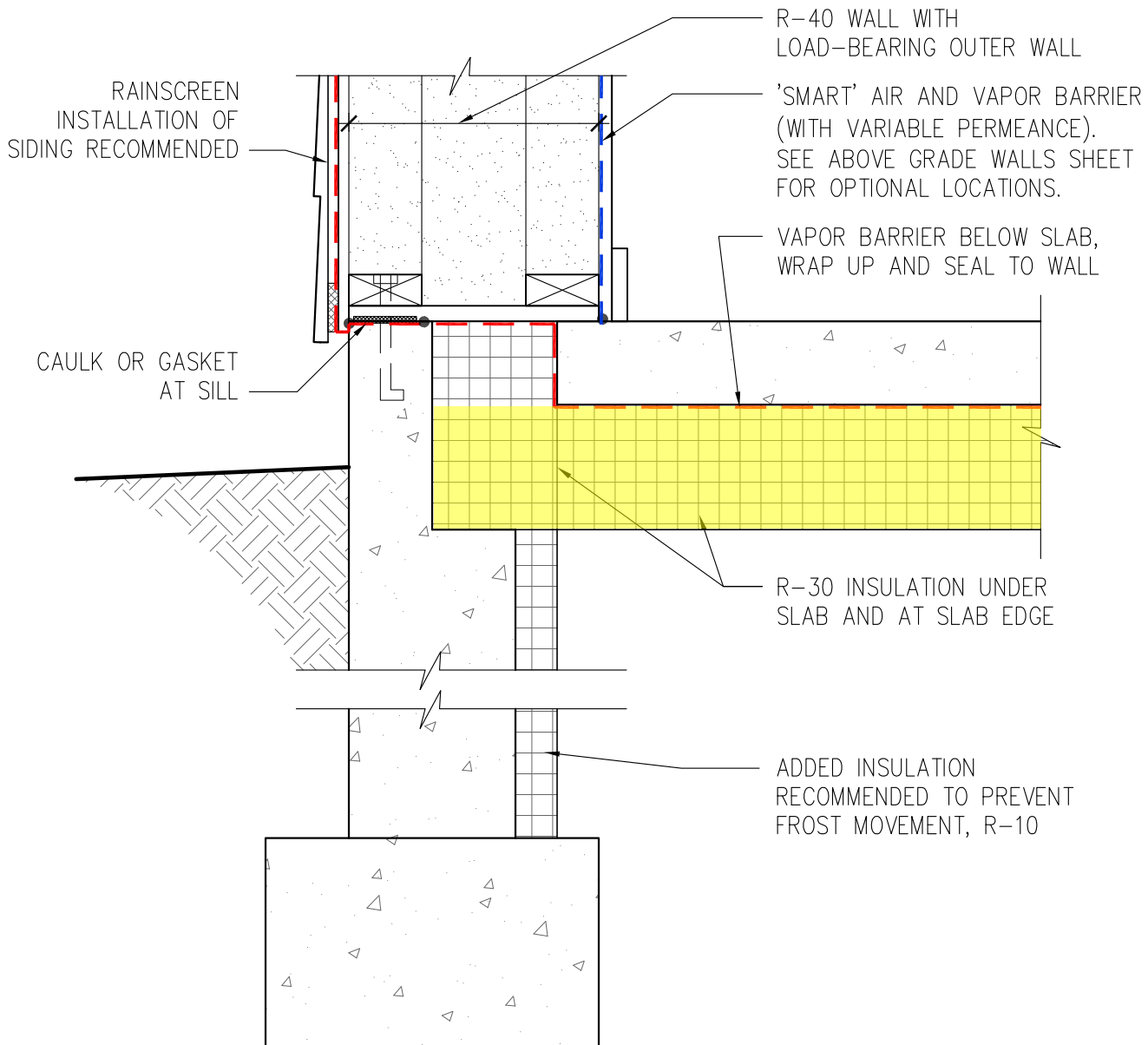
NOTES:

1. DRAWING FOR INFORMATIONAL USE ONLY. NOT INTENDED TO SHOW ALL ASPECTS OF DETAIL.
2. YELLOW HIGHLIGHTS INSULATION SPECIFIC TO COMPONENT
3. DASHED RED LINE INDICATES LOCATION OF AIR/ VAPOR BARRIER. NOT A SPECIFIC MATERIAL.

SCALE:



Efficiency Vermont Certified: HIGH PERFORMANCE LEVEL

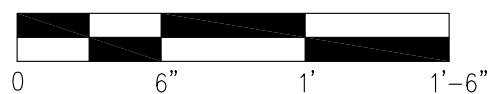


NOTCHED FOUNDATION AND DOUBLE STUD WALL AT SLAB ON GRADE

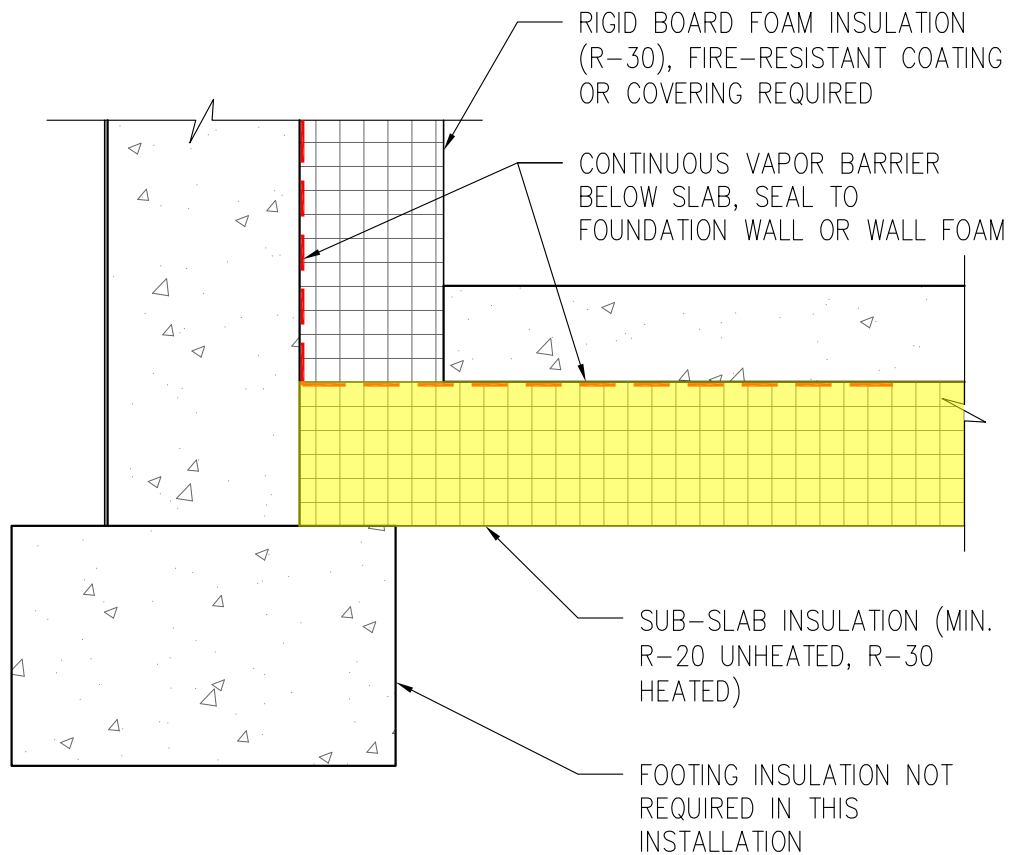
NOTES:

1. DRAWING FOR INFORMATIONAL USE ONLY. NOT INTENDED TO SHOW ALL ASPECTS OF DETAIL.
2. YELLOW HIGHLIGHTS INSULATION SPECIFIC TO COMPONENT
3. DASHED RED LINE INDICATES LOCATION OF AIR/ VAPOR BARRIER. NOT A SPECIFIC MATERIAL.

SCALE:



Efficiency Vermont Certified: HIGH PERFORMANCE LEVEL

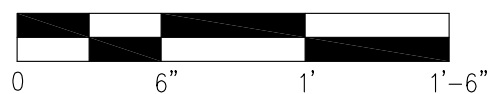


THERMALLY ISOLATED SLAB DETAIL
AT BELOW GRADE SLAB

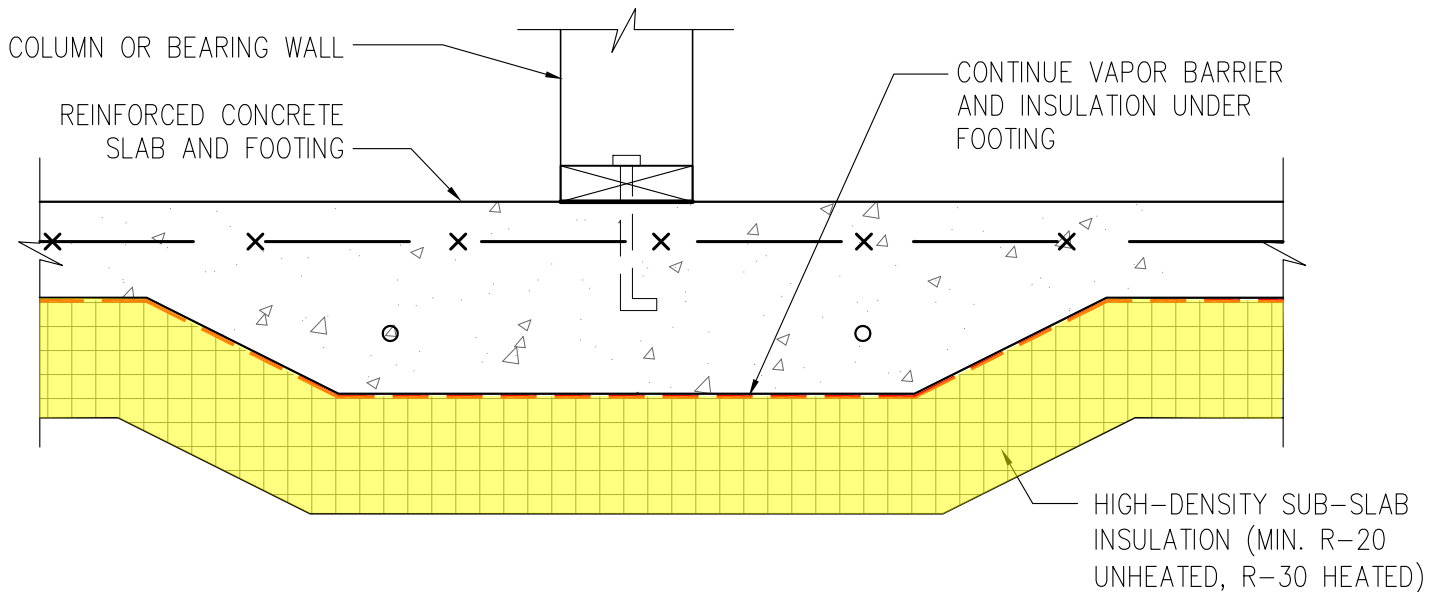
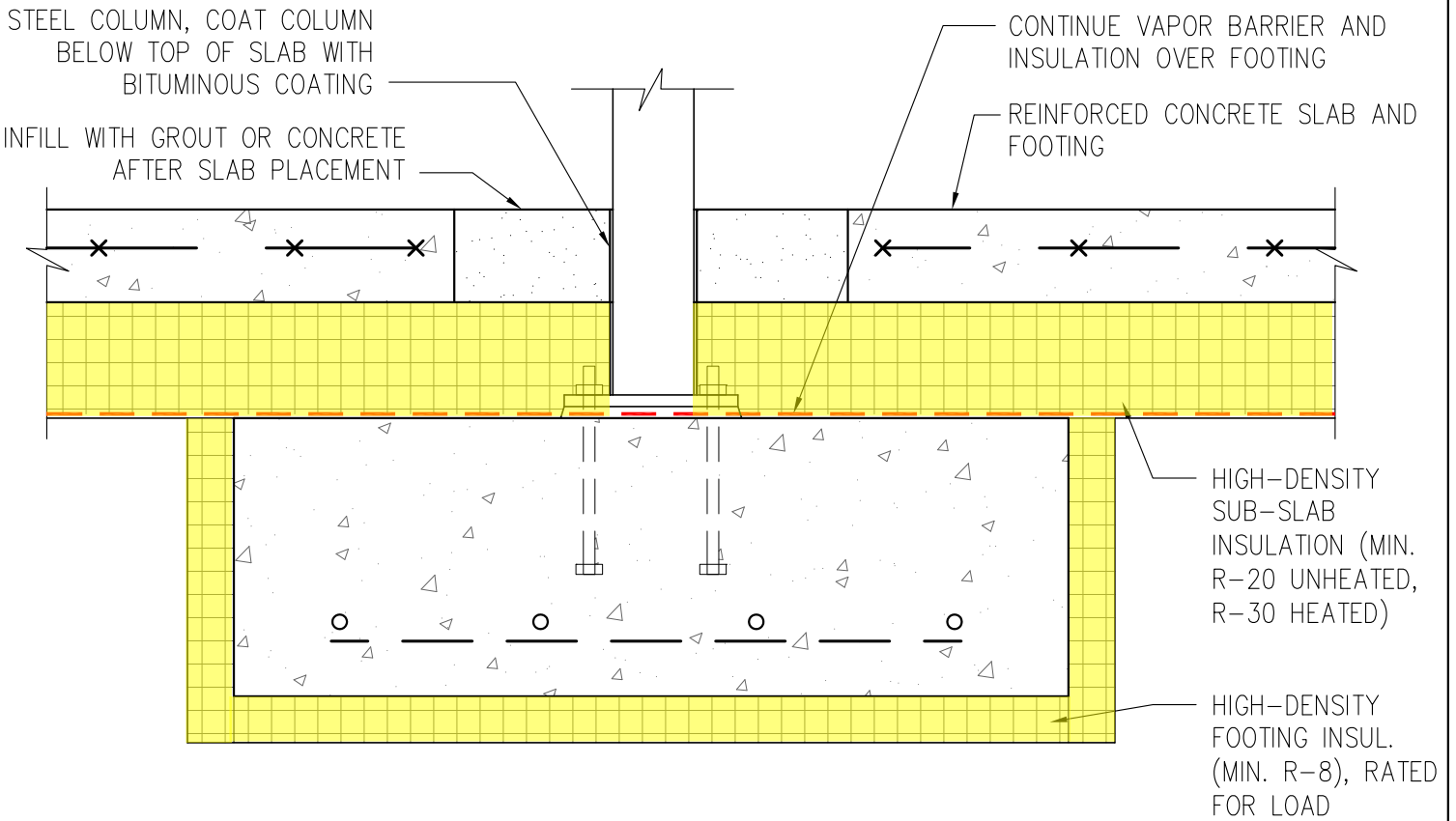
NOTES:

1. DRAWING FOR INFORMATIONAL USE ONLY. NOT INTENDED TO SHOW ALL ASPECTS OF DETAIL.
2. YELLOW HIGHLIGHTS INSULATION SPECIFIC TO COMPONENT
3. DASHED RED LINE INDICATES LOCATION OF AIR/ VAPOR BARRIER. NOT A SPECIFIC MATERIAL.

SCALE:



Efficiency Vermont Certified: HIGH PERFORMANCE LEVEL

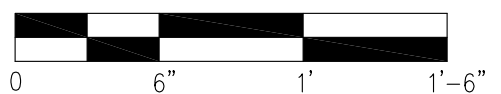


UNDER SLAB INSULATION AT INTERIOR COLUMN/ BEARING WALL

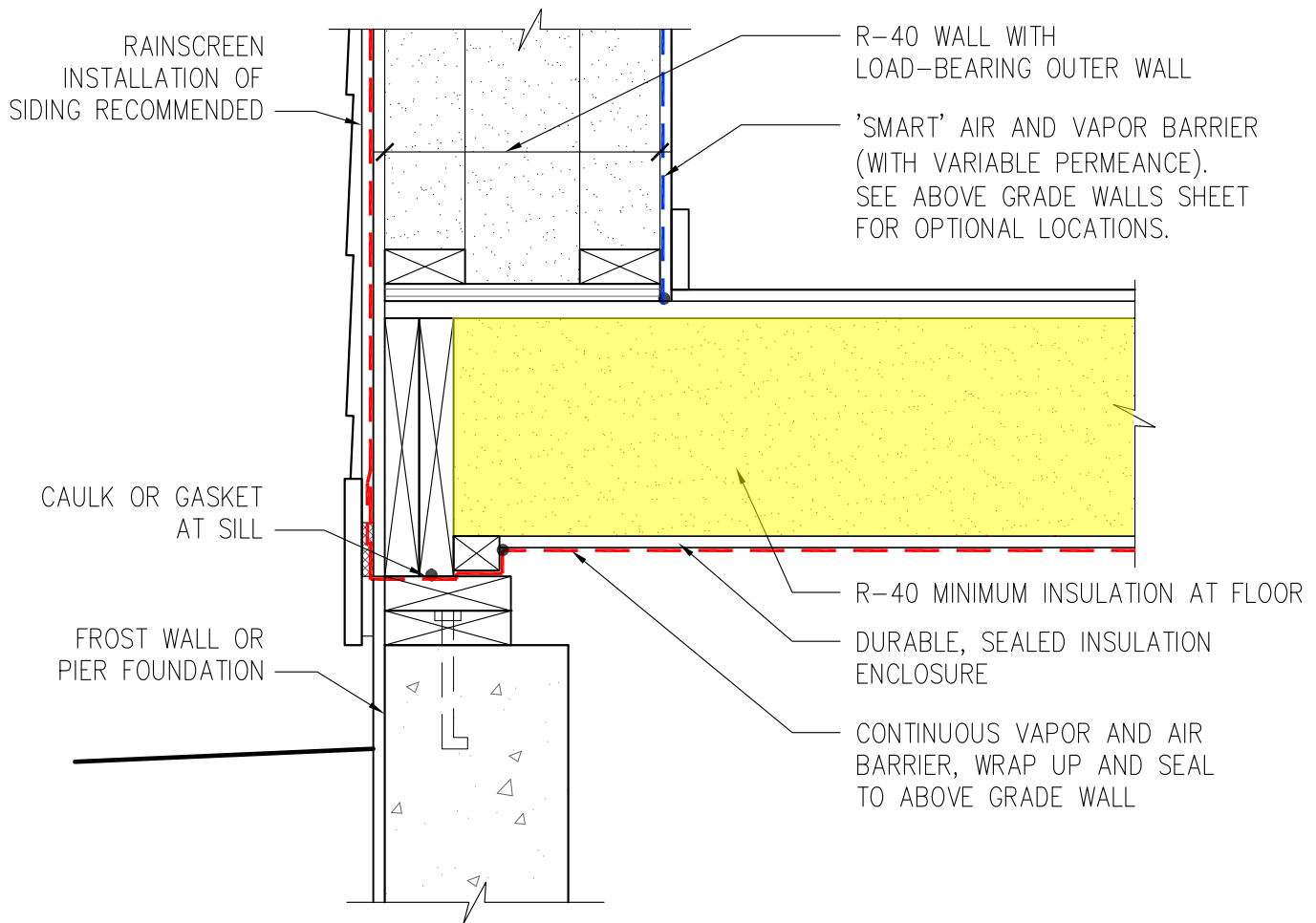
NOTES:

1. DRAWING FOR INFORMATIONAL USE ONLY. NOT INTENDED TO SHOW ALL ASPECTS OF DETAIL.
2. YELLOW HIGHLIGHTS INSULATION SPECIFIC TO COMPONENT
3. DASHED RED LINE INDICATES LOCATION OF AIR/ VAPOR BARRIER. NOT A SPECIFIC MATERIAL.

SCALE:



Efficiency Vermont Certified: HIGH PERFORMANCE LEVEL

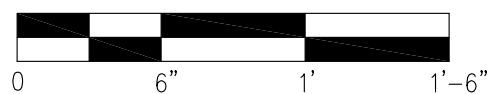


INSULATION AT FRAMED FLOOR

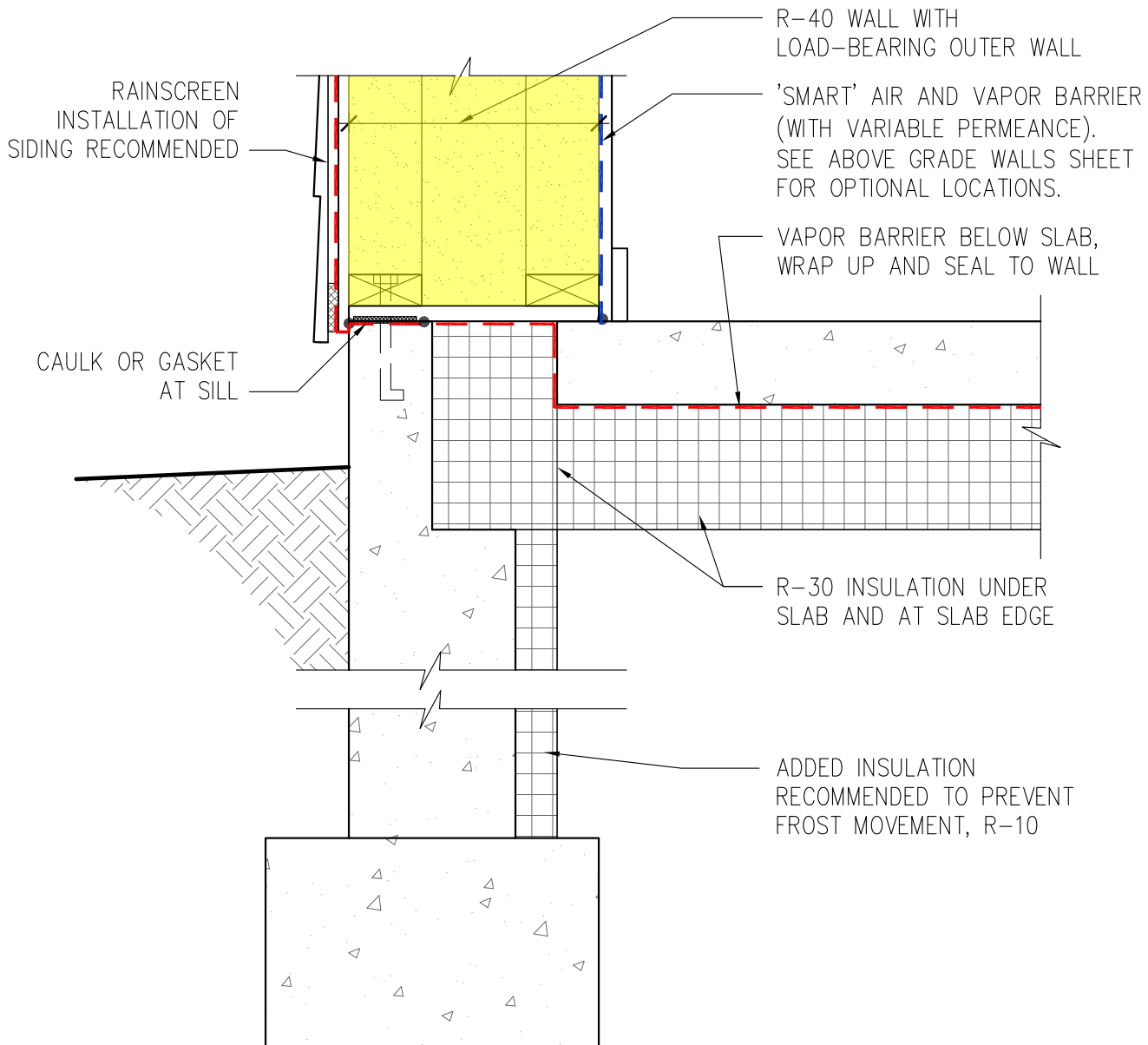
NOTES:

1. DRAWING FOR INFORMATIONAL USE ONLY. NOT INTENDED TO SHOW ALL ASPECTS OF DETAIL.
2. YELLOW HIGHLIGHTS INSULATION SPECIFIC TO COMPONENT
3. DASHED RED LINE INDICATES LOCATION OF AIR/ VAPOR BARRIER. NOT A SPECIFIC MATERIAL.

SCALE:



Efficiency Vermont Certified: HIGH PERFORMANCE LEVEL

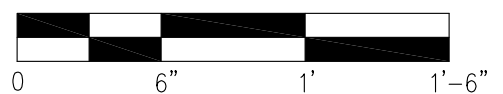


NOTCHED FOUNDATION AND DOUBLE STUD WALL AT SLAB ON GRADE

NOTES:

1. DRAWING FOR INFORMATIONAL USE ONLY. NOT INTENDED TO SHOW ALL ASPECTS OF DETAIL.
2. YELLOW HIGHLIGHTS INSULATION SPECIFIC TO COMPONENT
3. DASHED RED LINE INDICATES LOCATION OF AIR/ VAPOR BARRIER. NOT A SPECIFIC MATERIAL.

SCALE:



Efficiency Vermont Certified: HIGH PERFORMANCE LEVEL

NOTE: THIS IS NOT A RECOMMENDED DETAIL IF BUILDING A DOUBLE STUD WALL. BUT THE EXTERIOR FOUNDATION WALL INSULATION HERE ALIGNS WELL WITH THE ABOVE GRADE EXTERIOR INSULATION.

FOUNDATION WALL INSULATION, EXTERIOR, R-30 MIN.

R-40 MIN. WALL WITH CONTINUOUS EXTERIOR INSULATION. SEE ABOVE GRADE WALLS SHEET FOR OPTIONAL CONFIGURATIONS.

CAULK OR GASKET AT SILL

NOTCHED FOUNDATION -OR- CONCEAL JOINT WITH FINISH FLOORING

R-30 INSULATION UNDER SLAB

VAPOR BARRIER BELOW SLAB, WRAP UP AND SEAL TO WALL MIN. R-10

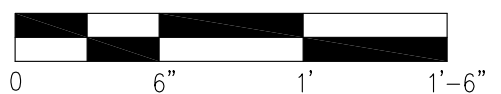
FOOTING INSULATION R-8 MIN.

EXTERIOR INSULATION AT SLAB ON GRADE

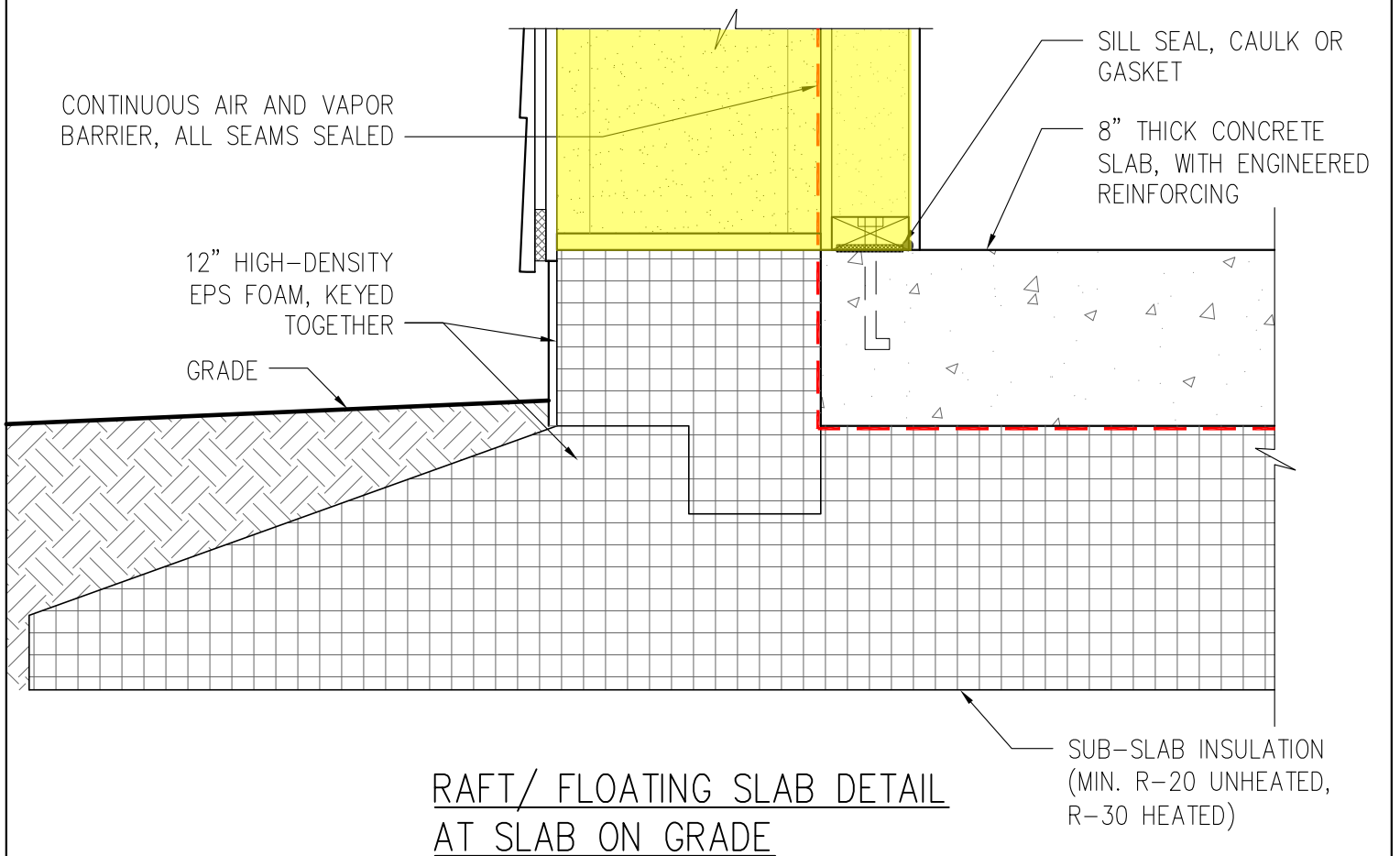
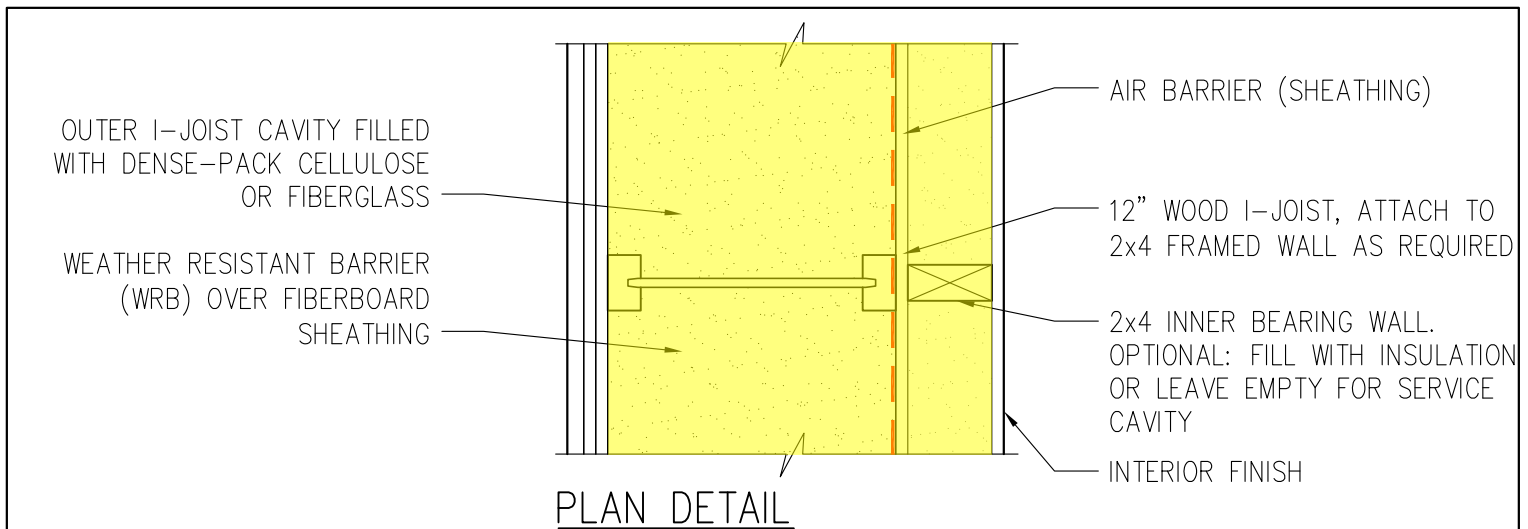
NOTES:

1. DRAWING FOR INFORMATIONAL USE ONLY. NOT INTENDED TO SHOW ALL ASPECTS OF DETAIL.
2. YELLOW HIGHLIGHTS INSULATION SPECIFIC TO COMPONENT
3. DASHED RED LINE INDICATES LOCATION OF AIR/ VAPOR BARRIER. NOT A SPECIFIC MATERIAL.

SCALE:



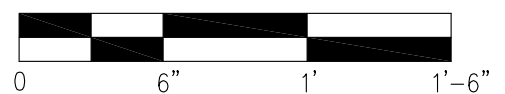
Efficiency Vermont Certified: HIGH PERFORMANCE LEVEL



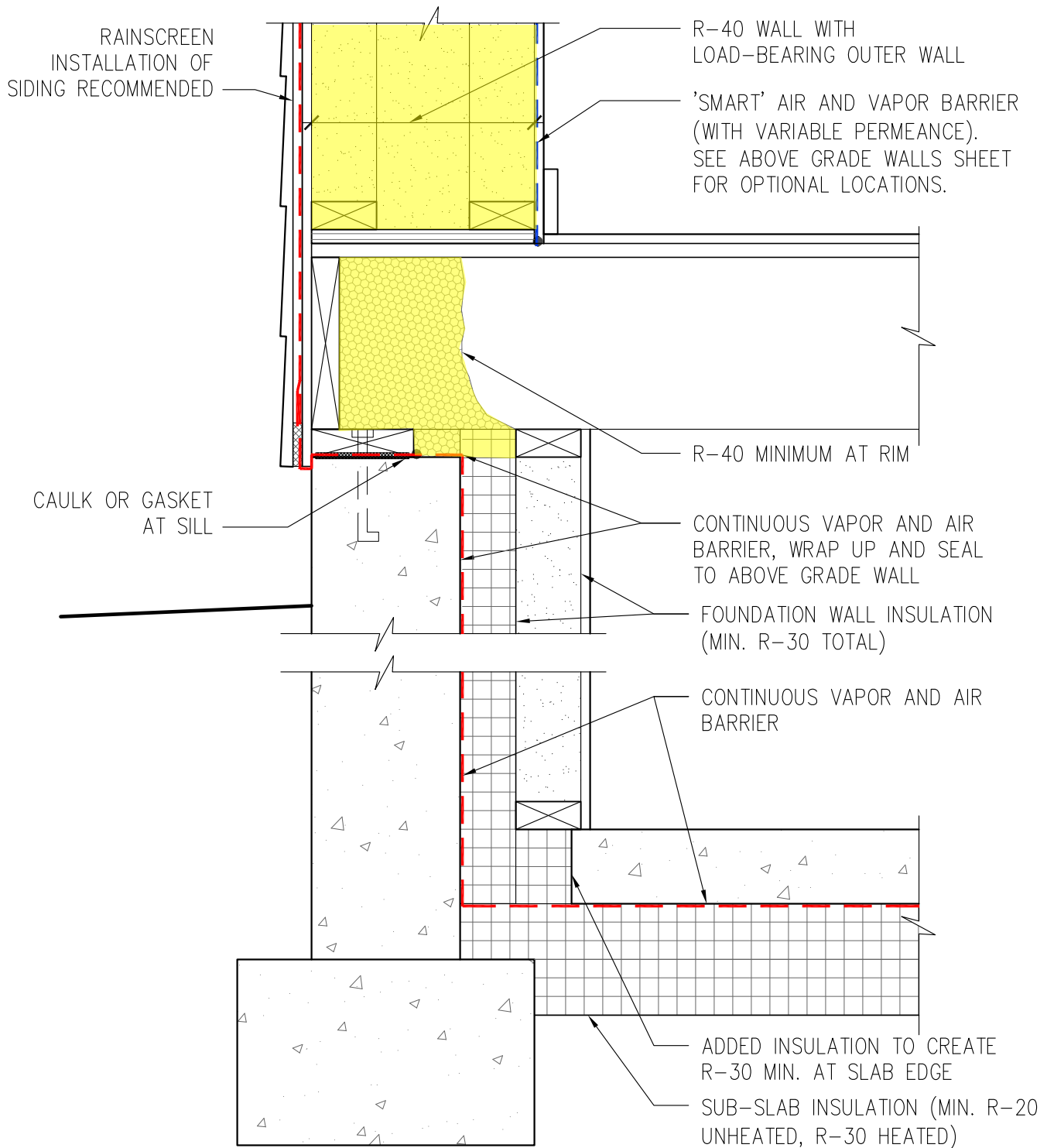
NOTES:

1. DRAWING FOR INFORMATIONAL USE ONLY. NOT INTENDED TO SHOW ALL ASPECTS OF DETAIL.
2. YELLOW HIGHLIGHTS INSULATION SPECIFIC TO COMPONENT
3. DASHED RED LINE INDICATES LOCATION OF AIR/ VAPOR BARRIER. NOT A SPECIFIC MATERIAL.

SCALE:



Efficiency Vermont Certified: HIGH PERFORMANCE LEVEL



FOUNDATION WALL TO ABOVE GRADE WALL (RIM) INSULATION DETAIL

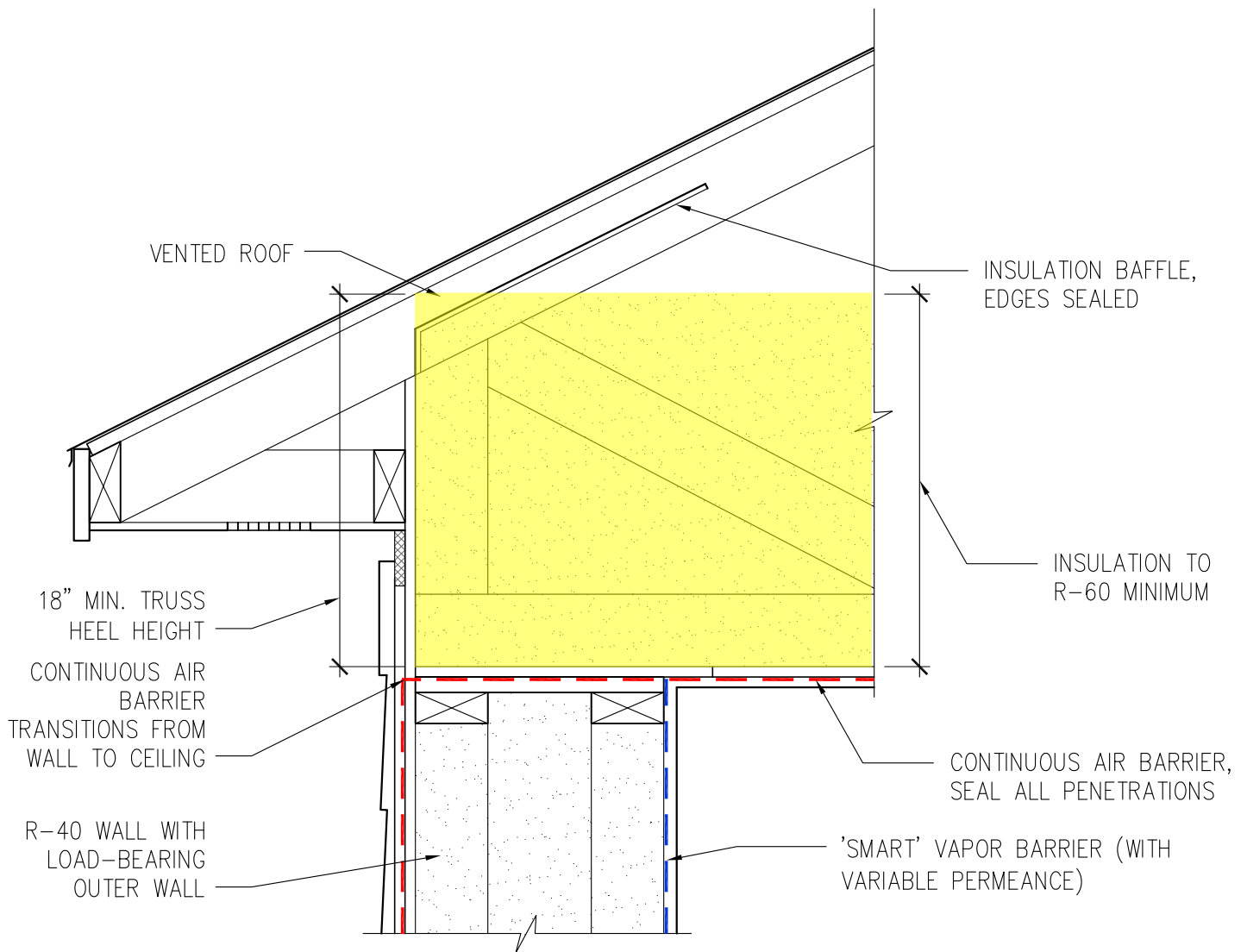
NOTES:

1. DRAWING FOR INFORMATIONAL USE ONLY. NOT INTENDED TO SHOW ALL ASPECTS OF DETAIL.
2. YELLOW HIGHLIGHTS INSULATION SPECIFIC TO COMPONENT
3. DASHED RED LINE INDICATES LOCATION OF AIR/ VAPOR BARRIER. NOT A SPECIFIC MATERIAL.

SCALE:



Efficiency Vermont Certified: HIGH PERFORMANCE LEVEL

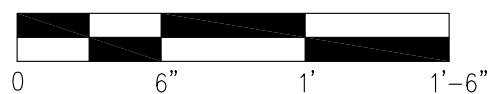


ROOF TRUSS EAVE AT DOUBLE STUD WALL
(FLAT CEILING)

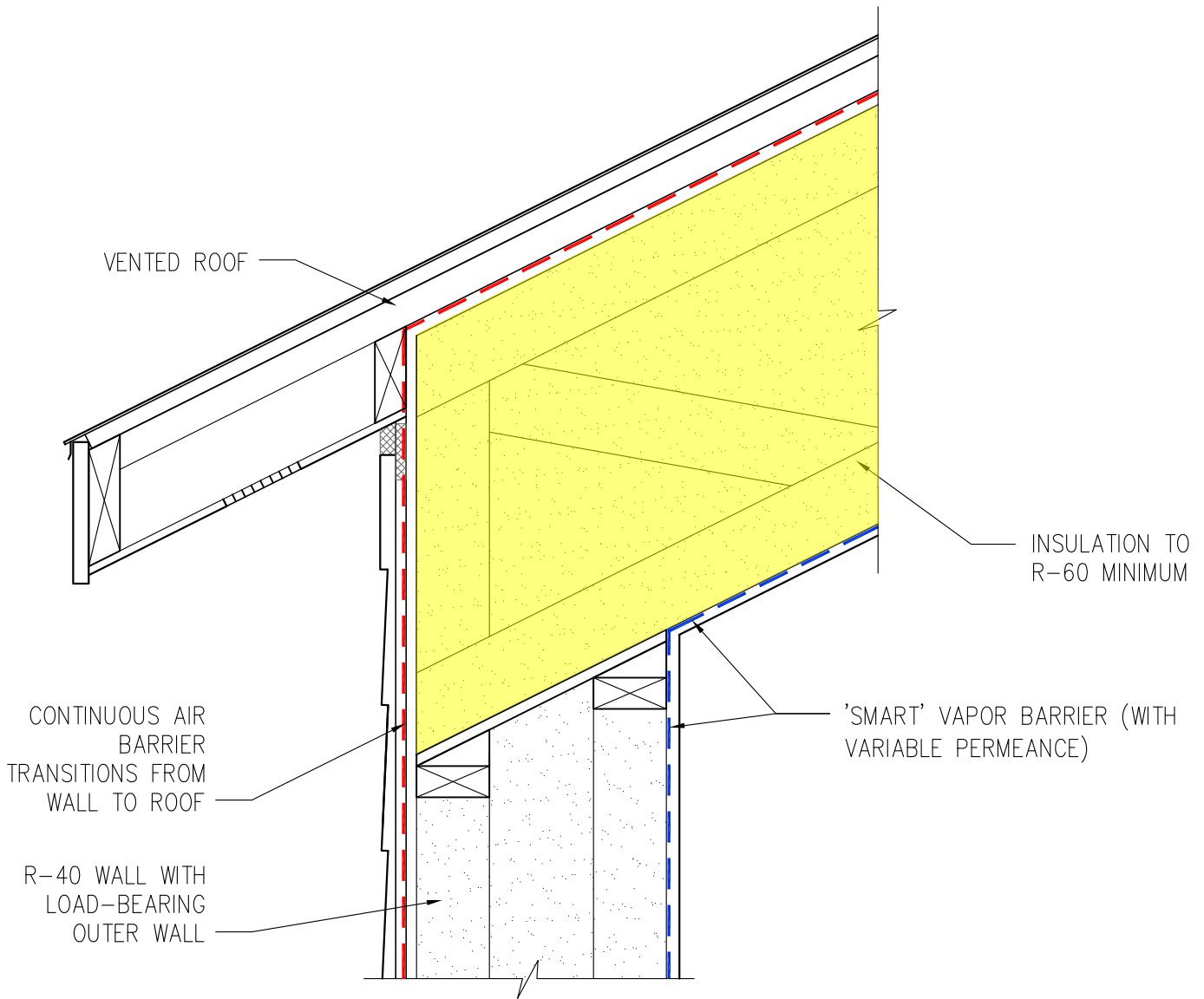
NOTES:

1. DRAWING FOR INFORMATIONAL USE ONLY. NOT INTENDED TO SHOW ALL ASPECTS OF DETAIL.
2. YELLOW HIGHLIGHTS INSULATION SPECIFIC TO COMPONENT
3. DASHED RED LINE INDICATES LOCATION OF AIR/ VAPOR BARRIER. NOT A SPECIFIC MATERIAL.

SCALE:



Efficiency Vermont Certified: HIGH PERFORMANCE LEVEL



CATHEDRAL CEILING EAVE AT DOUBLE STUD WALL

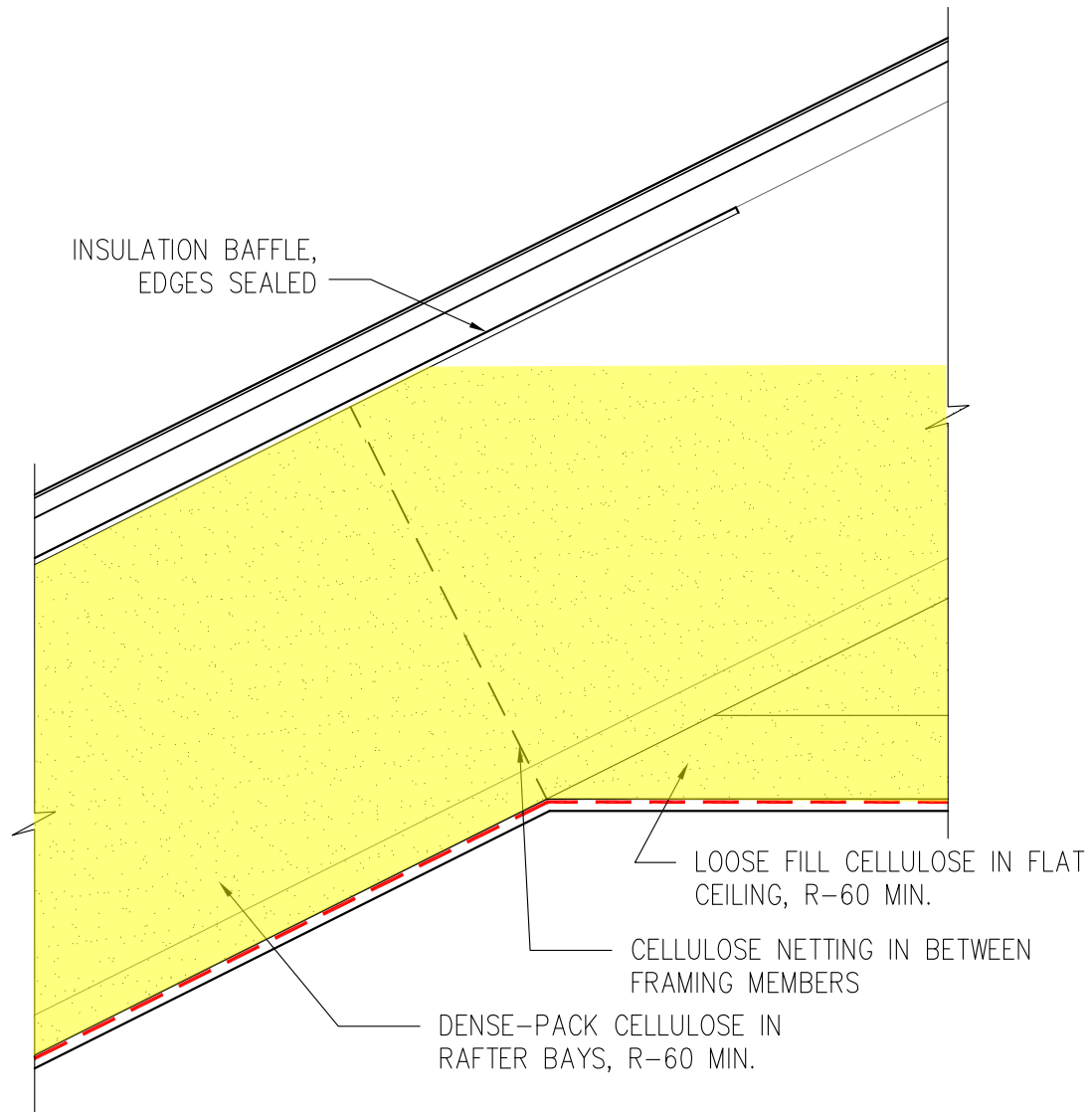
NOTES:

1. DRAWING FOR INFORMATIONAL USE ONLY. NOT INTENDED TO SHOW ALL ASPECTS OF DETAIL.
2. YELLOW HIGHLIGHTS INSULATION SPECIFIC TO COMPONENT
3. DASHED RED LINE INDICATES LOCATION OF AIR/ VAPOR BARRIER. NOT A SPECIFIC MATERIAL.

SCALE:



Efficiency Vermont Certified: HIGH PERFORMANCE LEVEL

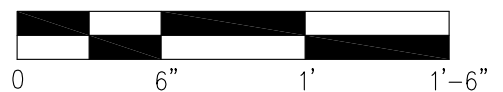


ROOF SLOPE-TO-FLAT INTERSECTION WITH CELLULOSE

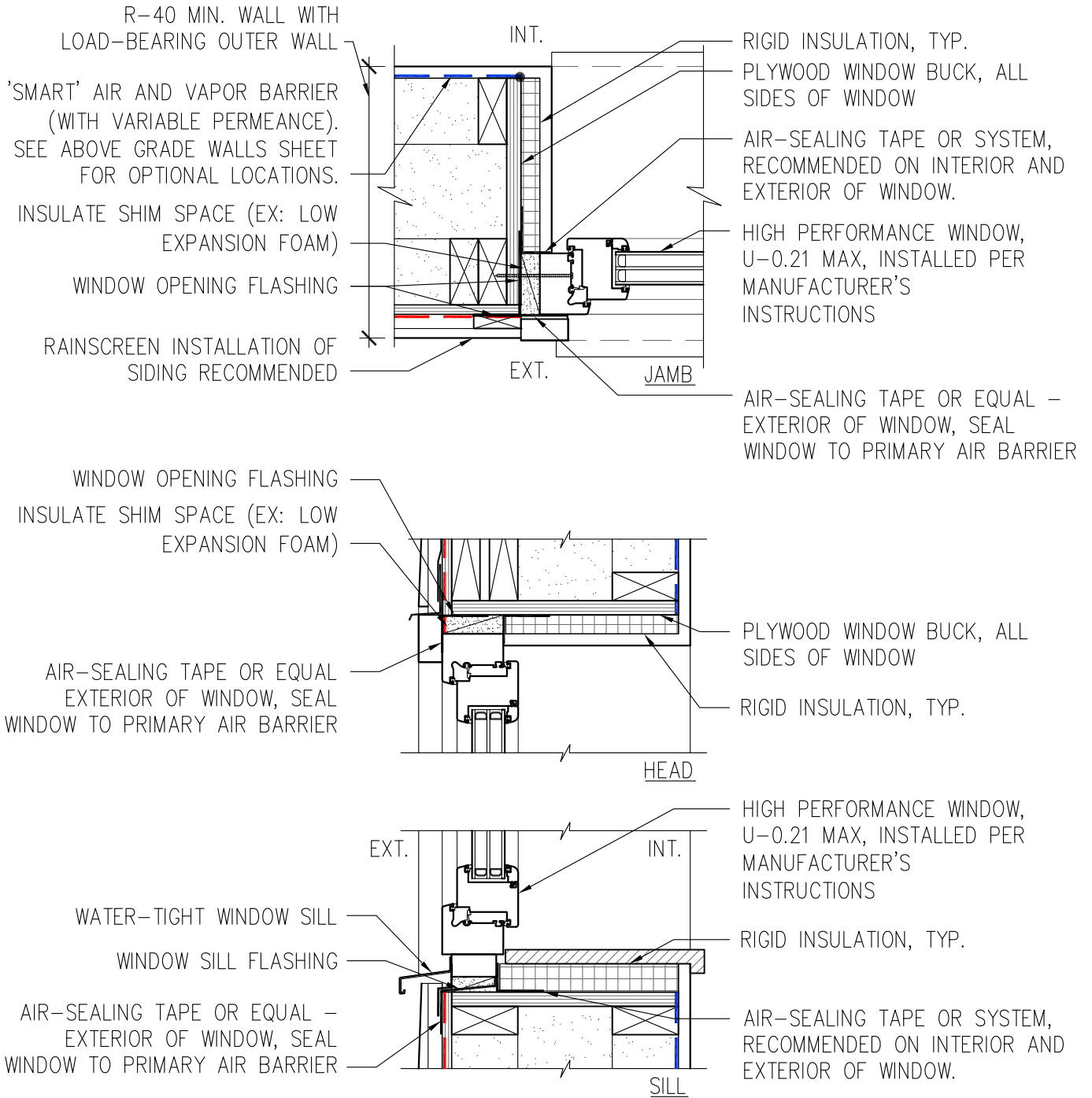
NOTES:

1. DRAWING FOR INFORMATIONAL USE ONLY. NOT INTENDED TO SHOW ALL ASPECTS OF DETAIL.
2. YELLOW HIGHLIGHTS INSULATION SPECIFIC TO COMPONENT
3. DASHED RED LINE INDICATES LOCATION OF AIR/ VAPOR BARRIER. NOT A SPECIFIC MATERIAL.

SCALE:



Efficiency Vermont Certified: HIGH PERFORMANCE LEVEL



WINDOW INSTALLATION DETAILS – EXTERIOR INSTALLATION

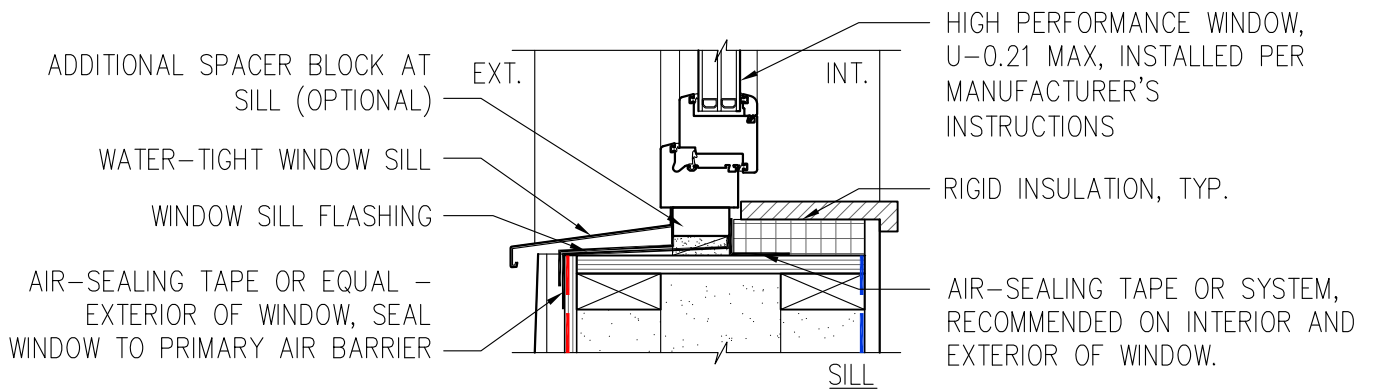
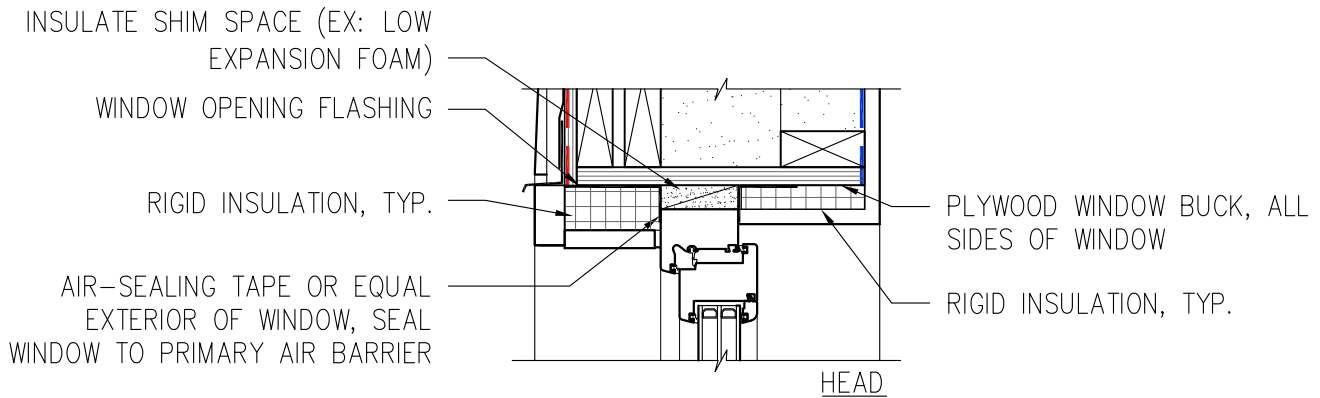
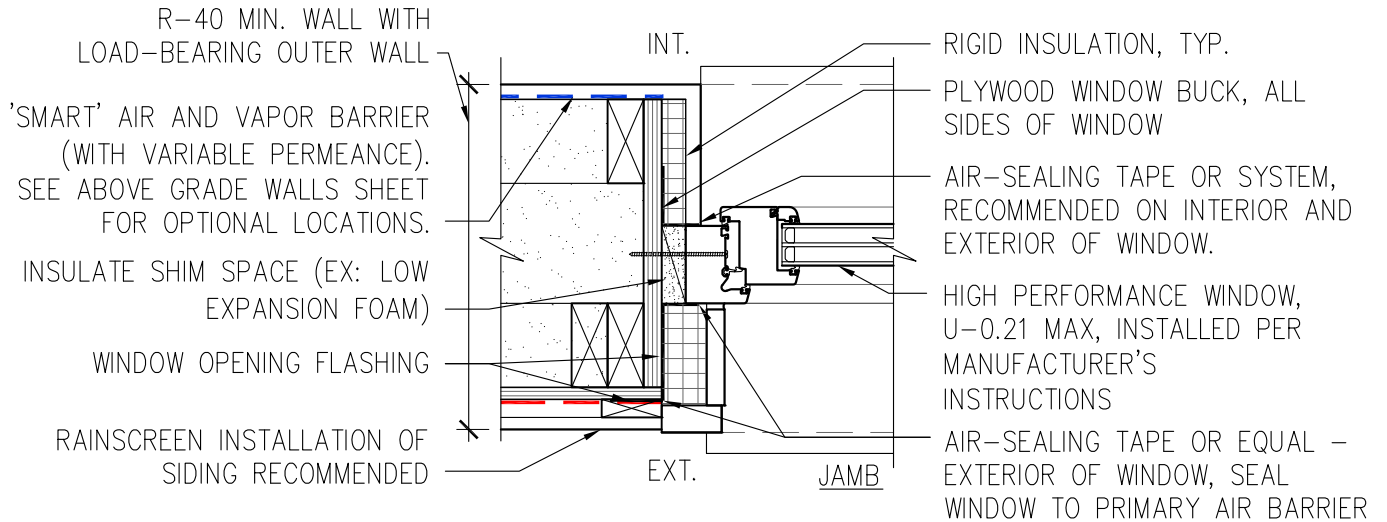
NOTES:

1. DRAWING FOR INFORMATIONAL USE ONLY. NOT INTENDED TO SHOW ALL ASPECTS OF DETAIL.
2. YELLOW HIGHLIGHTS INSULATION SPECIFIC TO COMPONENT
3. DASHED RED LINE INDICATES LOCATION OF AIR/ VAPOR BARRIER. NOT A SPECIFIC MATERIAL.

SCALE:



Efficiency Vermont Certified: HIGH PERFORMANCE LEVEL

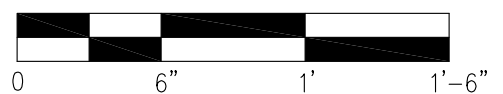


WINDOW INSTALLATION DETAILS - MID-WALL INSTALLATION

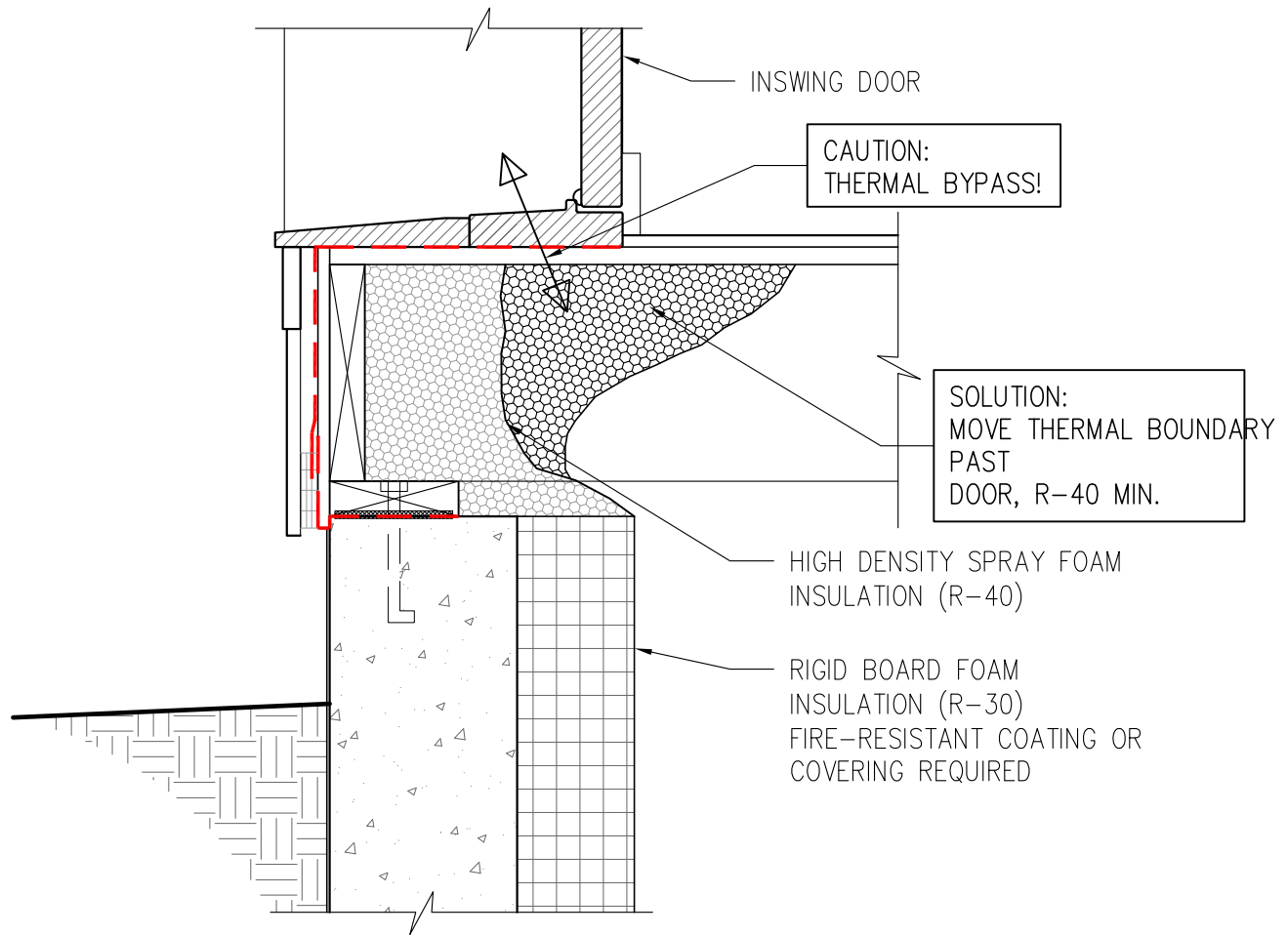
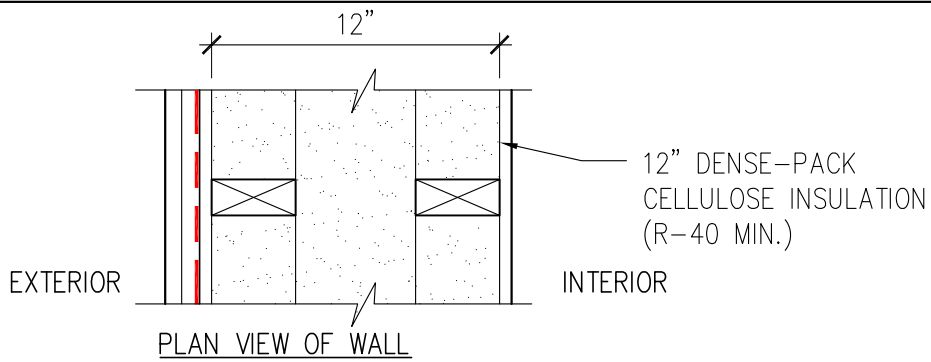
NOTES:

1. DRAWING FOR INFORMATIONAL USE ONLY. NOT INTENDED TO SHOW ALL ASPECTS OF DETAIL.
2. YELLOW HIGHLIGHTS INSULATION SPECIFIC TO COMPONENT
3. DASHED RED LINE INDICATES LOCATION OF AIR/ VAPOR BARRIER. NOT A SPECIFIC MATERIAL.

SCALE:



Efficiency Vermont Certified: HIGH PERFORMANCE LEVEL



DOOR SILL DETAIL AT DOUBLE STUD WALL

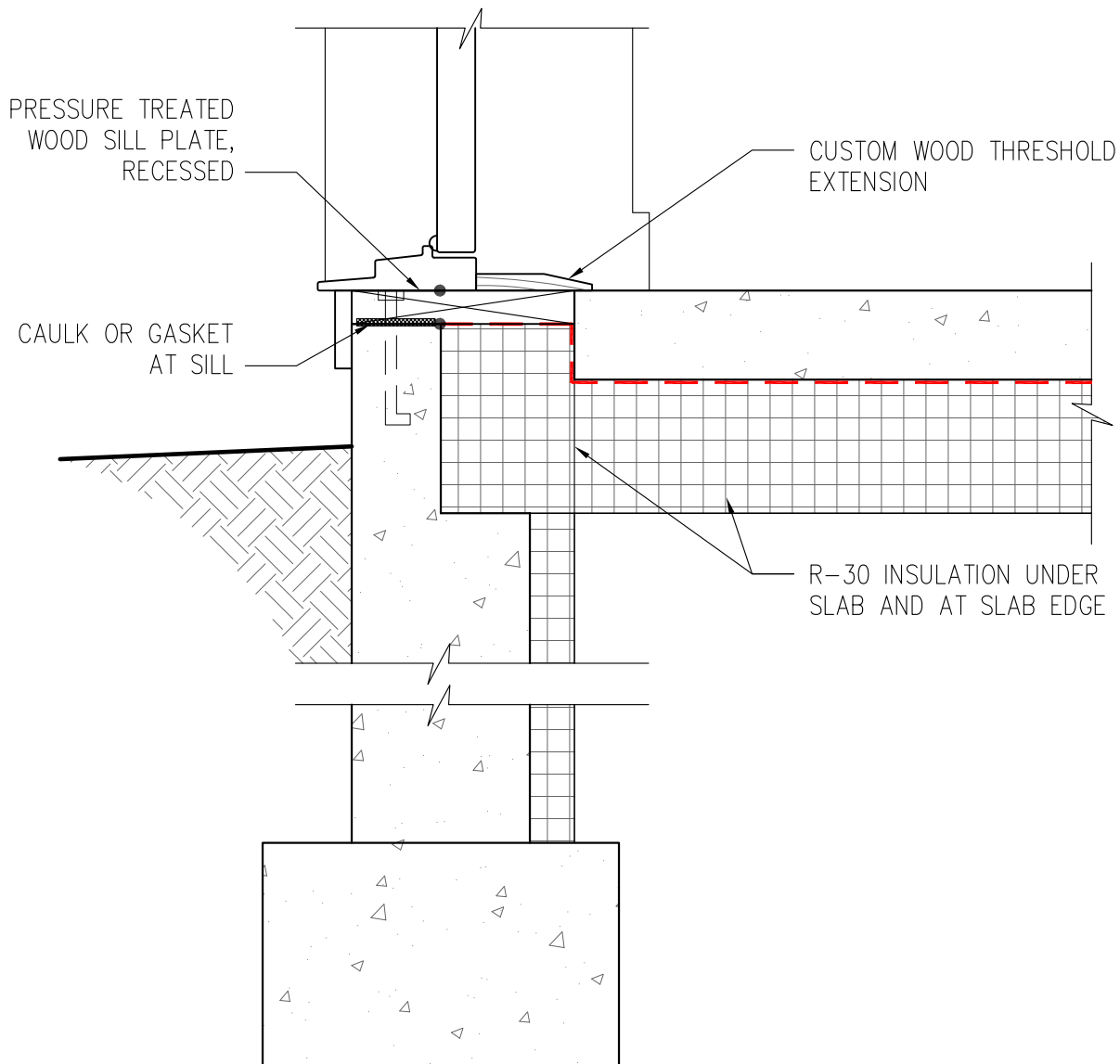
NOTES:

1. DRAWING FOR INFORMATIONAL USE ONLY. NOT INTENDED TO SHOW ALL ASPECTS OF DETAIL.
2. YELLOW HIGHLIGHTS INSULATION SPECIFIC TO COMPONENT
3. DASHED RED LINE INDICATES LOCATION OF AIR/ VAPOR BARRIER. NOT A SPECIFIC MATERIAL.

SCALE:



Efficiency Vermont Certified: HIGH PERFORMANCE LEVEL



NOTES:

1. DRAWING FOR INFORMATIONAL USE ONLY. NOT INTENDED TO SHOW ALL ASPECTS OF DETAIL.
2. YELLOW HIGHLIGHTS INSULATION SPECIFIC TO COMPONENT
3. DASHED RED LINE INDICATES LOCATION OF AIR/ VAPOR BARRIER. NOT A SPECIFIC MATERIAL.

SCALE:



Efficiency Vermont Certified: HIGH PERFORMANCE LEVEL